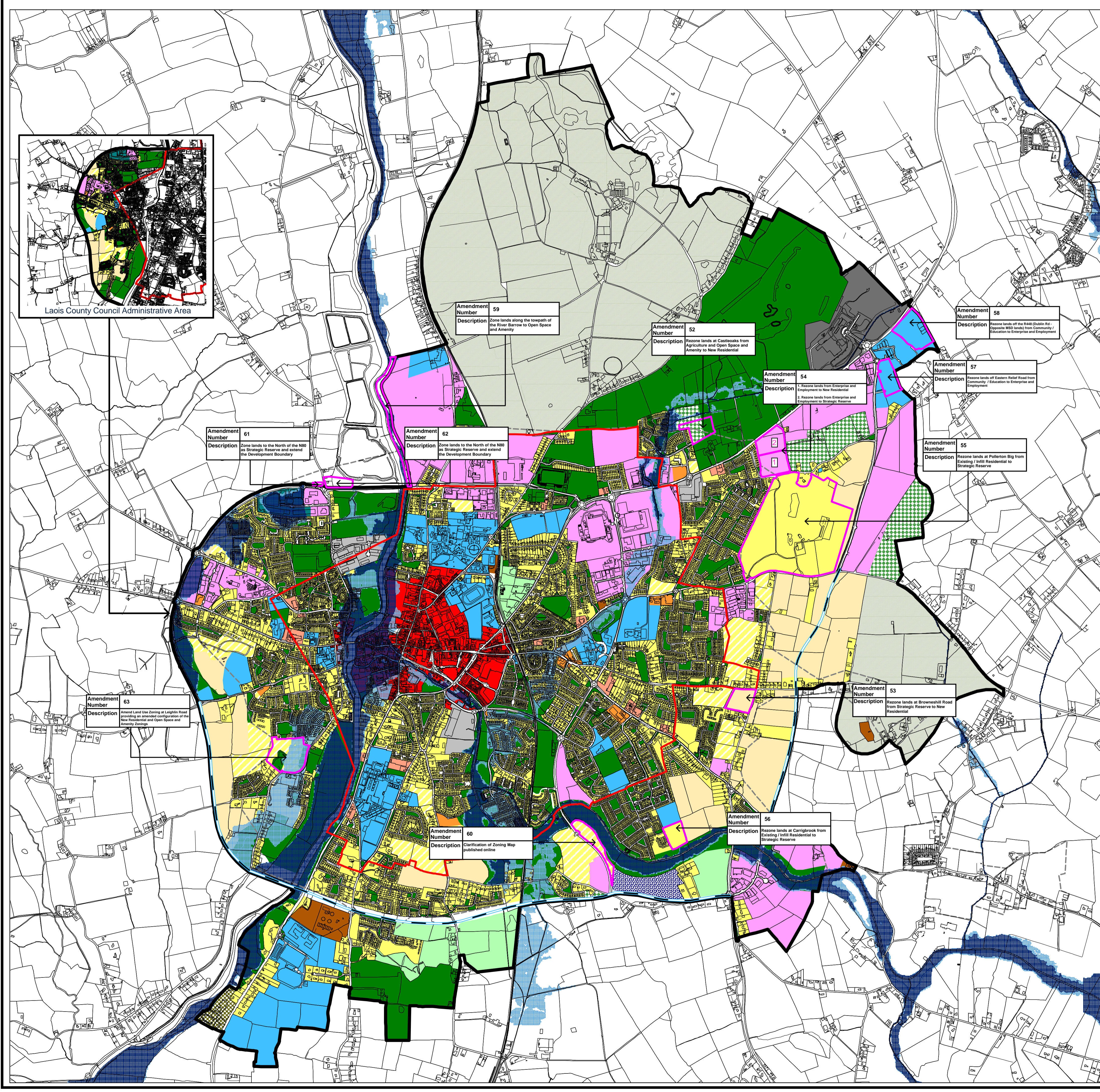
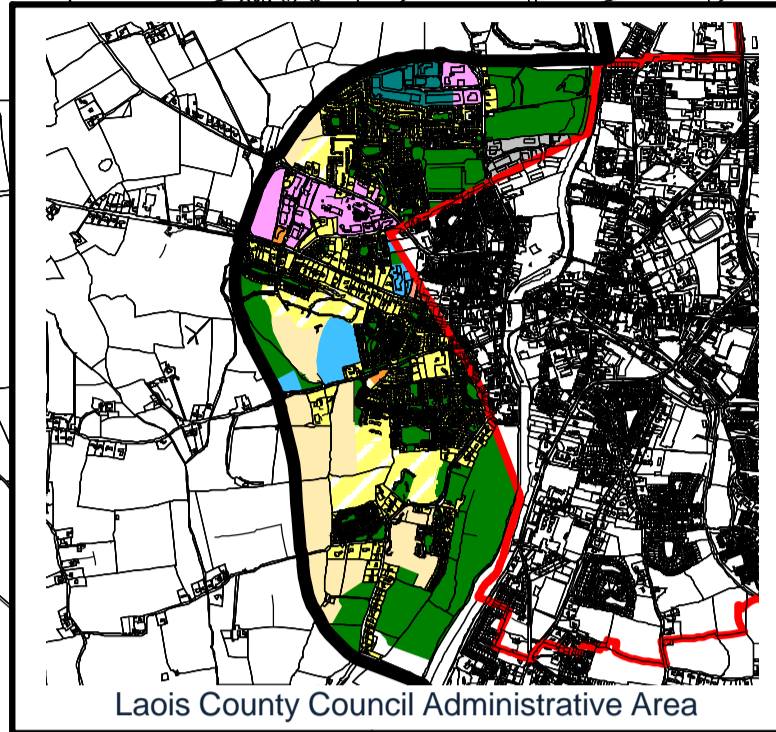
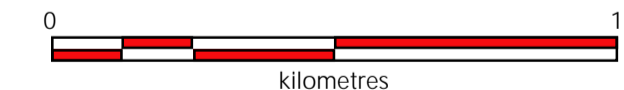


DRAFT CARLOW - GRAIGUECULLEN
 JOINT URBAN
 LOCAL AREA PLAN
 2024 - 2030
 PROPOSED MATERIAL AMENDMENTS



Legend

- Transport and Utilities
- Existing / Infill Residential
- Open Space and Amenity
- Commercial / Residential
- New Residential
- District Centre
- Enterprise and Employment
- Strategic Reserve
- Business and Innovation
- Neighbourhood Facilities / Centre
- Community / Education
- Town Centre
- Retail Warehousing
- Agriculture
- Resort
- Demesne Landscape
- Tourism and Leisure
- Industry
- Flood Zone A: 1% AEP (or a 1 in 100 chance of occurring in any given year)
- Flood Zone B: 0.1% AEP (or a 1 in 1000 chance of occurring in any given year)
- Roads Objectives
- CSO Settlement Boundary
- Former Carlow Town Council Boundary
- Joint Urban Local Area Plan Boundary



**Land Use Zoning Map
 (Map 12.1)**



CARLOW COUNTY COUNCIL
 AND
 LAOIS COUNTY COUNCIL
 FORWARD PLANNING SECTIONS