

CARLOW COUNTY LANDSCAPE CHARACTER ASSESSMENT AND SCHEDULE OF PROTECTED VIEWS

for: Carlow County Council

Athy Road,
County Carlow

C A R L O W
C O U N T Y C O U N C I L
COMHAIRLE CHONTAE CHEATHARLOCHA



by: CAAS Ltd.

2nd Floor, The Courtyard,
25 Great Strand Street,
Dublin 1



JULY 2015

Contents

Introduction	3
Part 1 Review of Existing Documentation.....	3
Part 2 Proposed Amendments.....	6
Sensitivity Mapping.....	6
Landscape Sensitivity Map.....	8
Further Studies Required	8
Part Three: Schedule of Additional Scenic Routes and Protected Views arising from public consultation	9
Part Four: the locations of additional Scenic Routes 21 - 24 and Views and Prospects 64 - 71.....	12
Part Five: County Carlow.....	16
Landscape Character Assessment.....	16
Landscape Character Areas.....	18
Landscape Types	18
Central Lowlands Character Area	20
River Slaney – East Rolling Farmland Landscape Character Area	24
Killeshin Hills Landscape Character Area	27
Mount Leinster/ Blackstairs Landscape Character Area	28
Landscape Capacity and Sensitivity in the Landscape Character Areas	32
Central Lowlands.....	32
River Slaney - East Rolling Farmlands	33
Killeshin Hills	34
Mount Leinster/ Blackstairs Uplands.....	35
Strategic Policy.....	36
Summary of key issues.....	36
Summary of Recommendations.....	37
Strategic policy response	38
Part Six: County Carlow.....	40
Schedule of Views, Prospects and Scenic Routes	40

Table of Figures

Figure 1 Existing <i>Carlow Landscape Character Assessment</i> [Locii and Cregan 2008] and <i>Carlow Views, Prospects and Scenic Routes</i> [Cregan 2008]	3
Figure 2 Extract from <i>Carlow Views, Prospects and Scenic Routes</i> [Cregan 2008] A Map showing Views [Red Dots] and Scenic Routes [blue squares].....	4
Figure 3 Extracts from <i>Carlow Landscape Character Assessment</i> [Locii & Cregan 2008] Map 15 Principal Landscape Character Areas and Map 16 Landscape Types	5
Figure 4 Recommended <i>Carlow Landscape Sensitivity Map</i> This map is based on assignment of Landscape Sensitivities to Principal Landscape Character Areas and Landscape Types from the existing, adopted <i>Landscape Character Assessment</i> and an associated <i>Schedule of Views, Prospects and Scenic Routes</i> Locii and Cregan 2011.....	7
Figure 5 Principal Landscape Character Areas	18
Figure 6 Landscape Types	19

Introduction

This report presents a review of the Landscape Character Assessment and Schedule of Protected Views of Carlow for incorporation into the County Development Plan Review with a renewed emphasis on the significance and sensitivity of landscape resources for the people of Carlow.

It presents Amendments to be read in conjunction with the already adopted Carlow Landscape Character Assessment and its associated Schedule of Views, Prospects and Scenic Routes

Part 1 Review of Existing Documentation

Carlow has an existing, adopted Landscape Character Assessment and an associated Schedule of Views, Prospects and Scenic Routes. These were prepared in 2008 and adopted in 2009 as part of the existing Carlow County Development Plan and the relevant maps, schedules and assessments are included in Part 3 of this document.

Following detailed field work and consultation, these documents were reviewed to assess:

- Conformity with requirements of relevant regulations, guidance and best practice in the preparation of Landscape Character Assessment;
- Appropriateness of methodology, expertise and documentation;
- Comprehensiveness of analysis and characterisation of existing landscape units;
- Accuracy of boundaries of areas; and
- Representativeness of Views, Prospects and Scenic Routes.

The result of this assessment concluded that the work is of the highest standard and is fully conformant with the requirements of regulations and best practice. It was recommended that this material should be retained as part of the Carlow County Development Plan – subject to the Amendments Proposed in Part 2 of this Amendment.

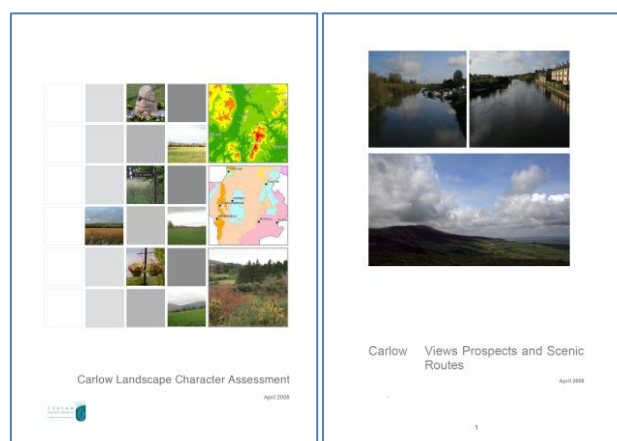


Figure 1 Existing *Carlow Landscape Character Assessment* [Locii and Cregan 2008] and *Carlow Views, Prospects and Scenic Routes* [Cregan 2008]

Carlow County Landscape Character Assessment and
Schedule of Protected Views

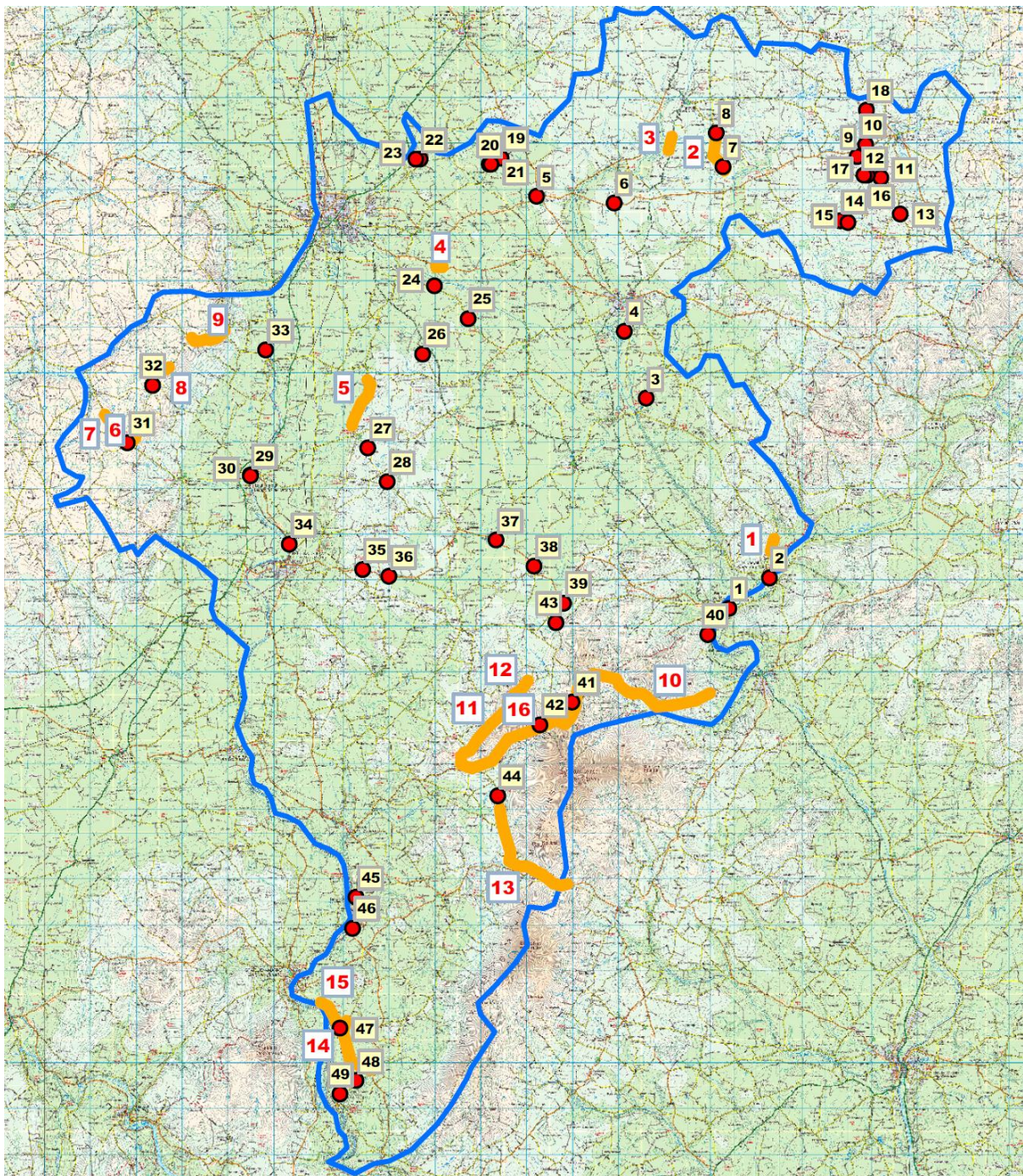


Figure 2 Extract from Carlow Views, Prospects and Scenic Routes [Cregan 2008] A Map showing Views [Red Dots] and Scenic Routes [blue squares]

A particularly commendable feature of the existing County Development is the Schedule of Views, Prospects and Scenic Routes – these were visited, examined and found to be:

- Highly representative of the best types of landscape resources in the county;
- Comprehensively documented with photography and descriptive tables; and
- Usefully ranked to illustrate the degree of significance.

Carlow County Landscape Character Assessment and
Schedule of Protected Views

The existing, adopted Landscape Character Assessment 2008 included – at Map 15 - a comprehensive and insightful examination that grouped the landscapes of Carlow into four major Landscape Character Areas [See below]. These Areas were subject to more detailed analysis that identified 6 Landscape Types – at Map 16. These were intended to provide a more specific basis to assist development management by recognising specific features such as river valleys and transitional mid slope areas. This is good practice because these smaller features often contain some of the more significant and sensitive landscape that are highly valued for scenery and amenity.

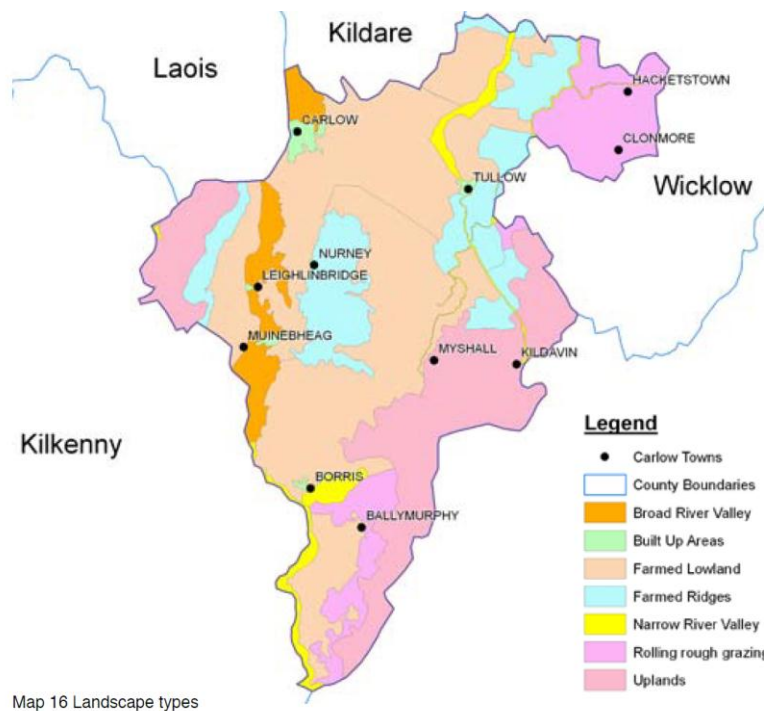
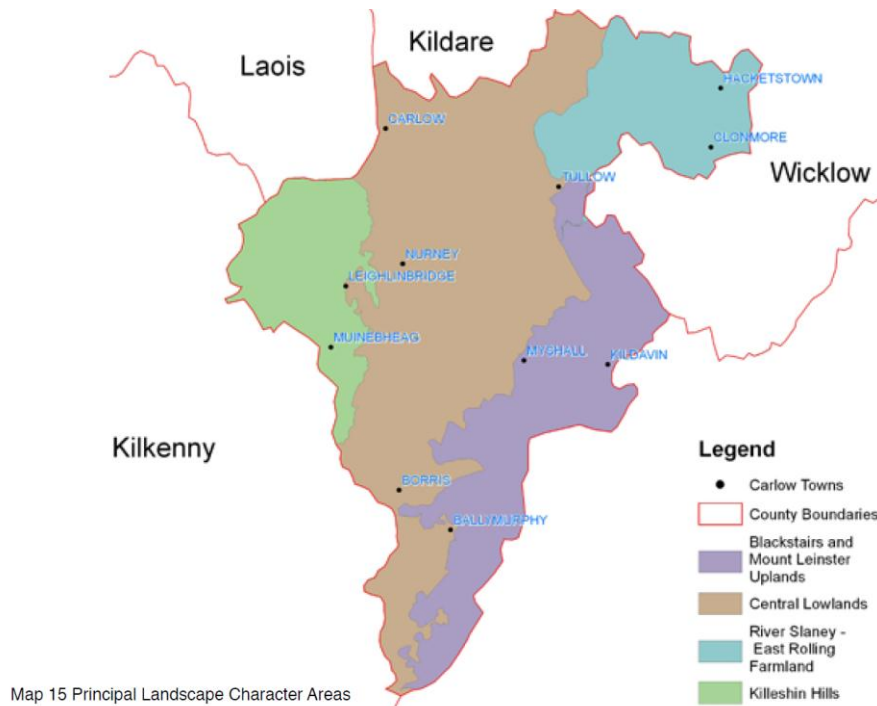


Figure 3 Extracts from Carlow Landscape Character Assessment [Locii & Cregan 2008] Map 15 Principal Landscape Character Areas and Map 16 Landscape Types

Part 2 Proposed Amendments

The Landscape Character Assessment needs to be amended to take account of

- Submissions received as part of the Plan Review Process
- The need for consistency with the Landscape Character Assessments of adjoining counties

Submissions received as part of the Plan Review Process

A significant number of hitherto overlooked views, prospects and scenic routes were identified as being of value to local and regional communities – particularly in the southern part of the county to an area that lies to the south and east of Borris. Full details of these are contained at Appendix 1.

Consistency with the Landscape Character Assessments of adjoining counties

The Landscape Character Assessment needs to be augmented by the adoption of a Landscape Sensitivity Map to ensure that there a comprehensive and easily understood framework to guide development in Carlow while also ensuring better consistency with the Landscape Character Assessments of adjoining counties. The following section recommends a Landscape Sensitivity map – based on all of the above considerations.

Sensitivity Mapping

	SENSITIVITY				
	1 Least	2 Decreasing	3 Moderate	4 Increasing	5 Most
Built Up Areas					
Farmed Lowland				*	
Broad River Valley					
Farmed Ridges					
Narrow River Valley					
Rolling Rough Grazing					
Uplands					

Table 1 Assignment of Landscape Sensitivities to Principal Landscape Character Areas and Landscape Types from Locii and Cregan 2011 [Note that Farmed Lowland is classified as Increasing Sensitivity Level 4 south of Borris on account of small scale and proximity and inter-visibility with River Valleys and Uplands]

Landscape Sensitivity Mapping

A Landscape Sensitivity map was prepared by according Sensitivity rating to the existing adopted Principal Landscape Character Areas [Locii/Cregan 2008]. Table 4, above shows how ratings – based upon the assessments within the LCA – correspond with the Landscape Character Areas.

These boundaries were found to be very suitable because they were based on extensive LCA field work augmented by ensuring conformity with a number of ‘mappable’ and natural factors such as landcover, soils, geology and slope. The most sensitive areas contain the majority of the viewpoints and scenic routes illustrated in Figure 2 which confirms the validity of this approach

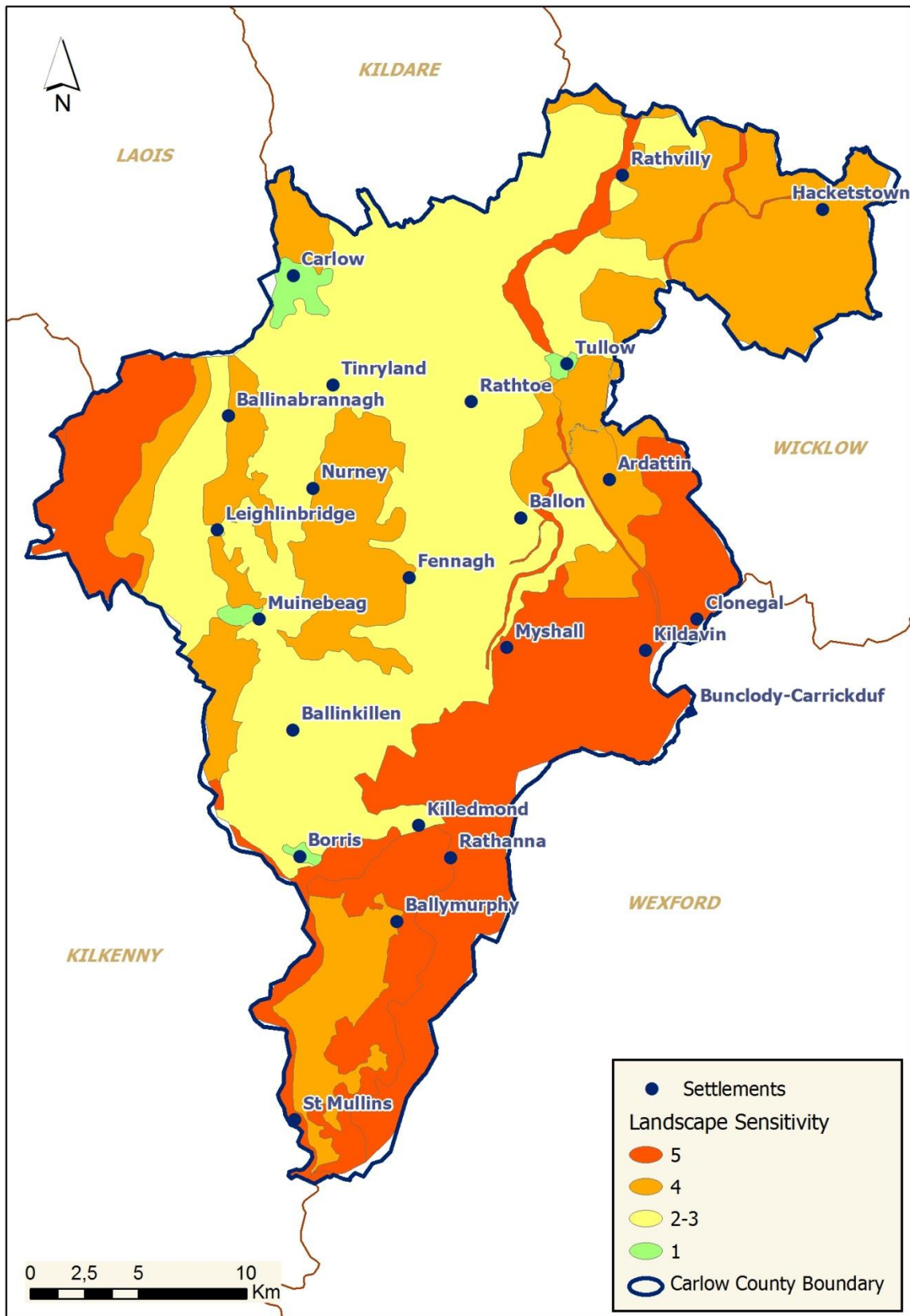


Figure 4 Recommended Carlow Landscape Sensitivity Map This map is based on assignment of Landscape Sensitivities to Principal Landscape Character Areas and Landscape Types from the existing, adopted Landscape Character Assessment and an associated Schedule of Views, Prospects and Scenic Routes Locii and Cregan 2011.

Landscape Sensitivity Map

Having regard to the existing, adopted landscape protection provisions of the Carlow County Development Plan it is recommended that an Amendment be adopted to incorporate a Sensitivity Map that incorporates the material and methodology from the Locii/Cregan reports.

Further Studies Required

During the lifetime of the Plan it should be an objective of Carlow County Council to commission an Historic Landscape Characterisation (HLC) study in key areas (St Mullins/Dranagh, Borris House/Currane Tower/Whiteboy Towers) to complement the LCA and should include mapping of the curtilage and setting of protected structures, demesne landscapes within these areas.

Part Three: Schedule of Additional Scenic Routes and Protected Views arising from public consultation

Introduction

Having regard to the submissions referred to above the following scenic routes and views and prospects are proposed as additions to those already identified in the existing Carlow Views Prospects and Scenic Routes. Mapping is provided in Part Four of this report to illustrate the locations of these additional Scenic Routes and Protected Views.

It will be noted that the majority of the proposed new Views, prospects and scenic routes occur in areas that lie to the east and south of Borris – i.e. within the area identified as being of highest sensitivity in Figure 4.

Proposed Additional Views and prospects

ID	Location	Orientation	Features	Quality	Comments
64	High ground just north of Ballinkillen on the Ballinkillen to Lorum road	northeast to southwest	View of entire Blackstairs and Barrow Valley from Mt Leinster to Brandon Hill. Currane, Mt Leinster to Brandon Hill. Views towards Slievebawn.	4	Offers expansive vistas of the plain to the north and the uplands to the south.
65	High ground just north of Ballinkillen on the Ballinkillen to Lorum road	northeast to southwest	View of entire Blackstairs and Barrow Valley from Mt Leinster to Brandon Hill. Currane, Mt Leinster to Brandon Hill. Views towards Slievebawn.	4	Offers expansive vistas of the plain to the north and the uplands to the south.
66	Panoramic view on R705 from point north of Ballyphenan T-junction.	northeast to south	Intermittent views of entire Blackstairs from Currane and Mt Leinster to Blackstairs.	4	
67	Spahill Cross roads	southwest	Panoramic view looking towards Borris Viaduct and Ballycoppigan.	3	
68	Cashel Cross and Doyle's Cross Roads	southwest	Panoramic view from Cashel Cross looking towards Borris ACA, Borris House demesne and Ballycoppigan	3	
69	Ballybrack	southwest	Panoramic views looking towards Brandon Hill.	2	
70	Ballybrack	southwest	Panoramic views looking towards Brandon Hill.	4	
71	Tinnecarrig	northeast to south	Panoramic view on R703 from high point at Tinnecarrig. View of entire Mt Leinster and Blackstairs range	3	

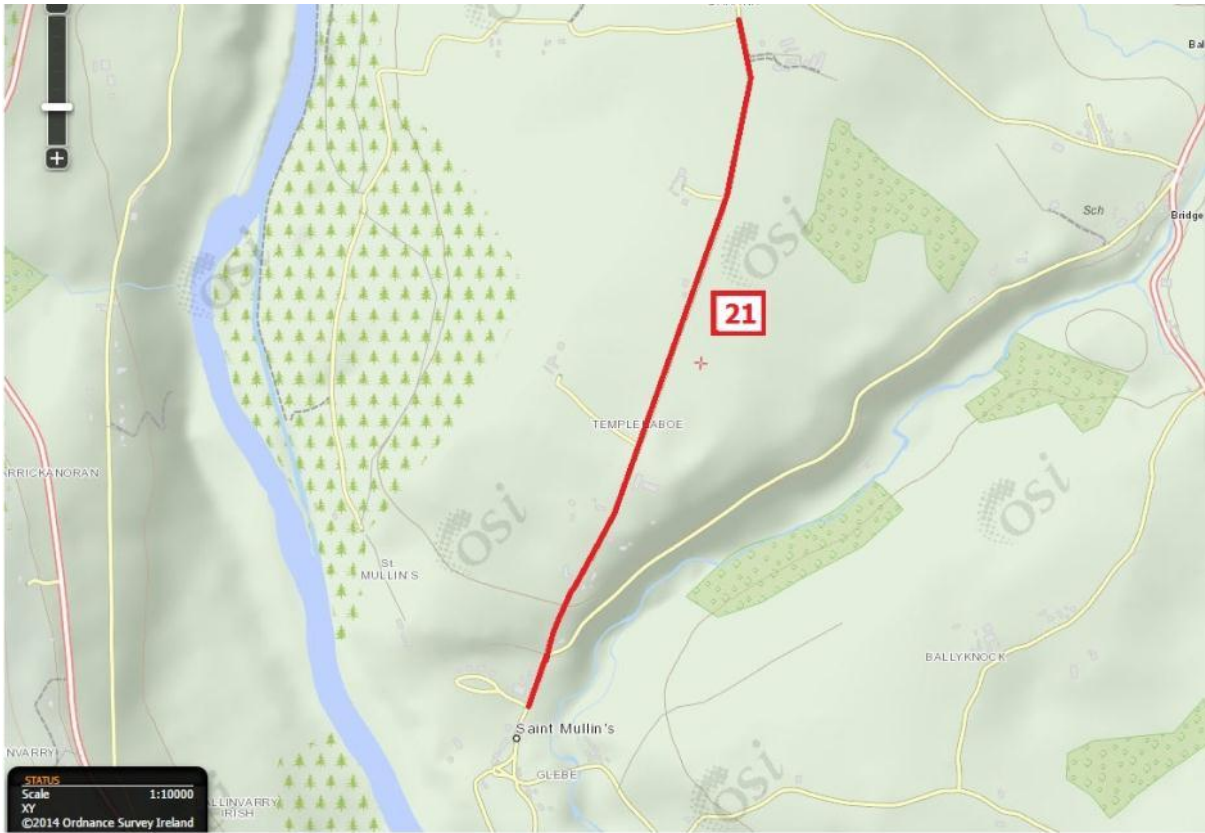
Proposed additional Scenic Routes

ID	Location	Route	Features	Quality	Comments
21	Saint Mullin's	From St Mullins to Glynn along river valley	Intermittent views to Blackstairs and Brandon east and west.	3	Views are intermittent because of tall hedges. The southern part of the route is an integral part of Saint Mullins
22	SE of Borris	From Rathanna to Borris via Rosdellig, Ballybrack, Kyle, Tinnacarrig, Baroughan Little, Ballycoppigan and Kilcoltrim.	<p>Panoramic view on R703 from high point at Tinnecarrig.</p> <p>View northeast to south of entire Mt Leinster and Blackstairs range</p> <p>Panoramic views from Ballybrack looking southwest towards Brandon Hill and Blackstairs.</p> <p>Views North West to Borris ACA, views to south of entire Blackstairs range and southwest to Brandon Hill</p>	2	The topographic variety, scale of roads, presence of historic properties and significant quantities of mature vegetation combine to confer this route with a sequence of views and experiences that vary from local enclosure to surprising panoramas across nearby and distant views of uplands.
23	NW of Borris	R705 Borris to Ballyfeanan, just south of Kilcumney junction	Views northeast to south of entire Blackstairs from Currane and Mt Leinster to Blackstairs.	4	While the local landscape is unremarkable, this approach road, with expansive views of uplands, is an integral part of the context and setting of Borris.
24	Ballinkillin/Lorum	Ballinree Cross	Views northeast to southwest of entire Blackstairs and Barrow	4	While the local landscape is

Carlow County Landscape Character Assessment and
Schedule of Protected Views

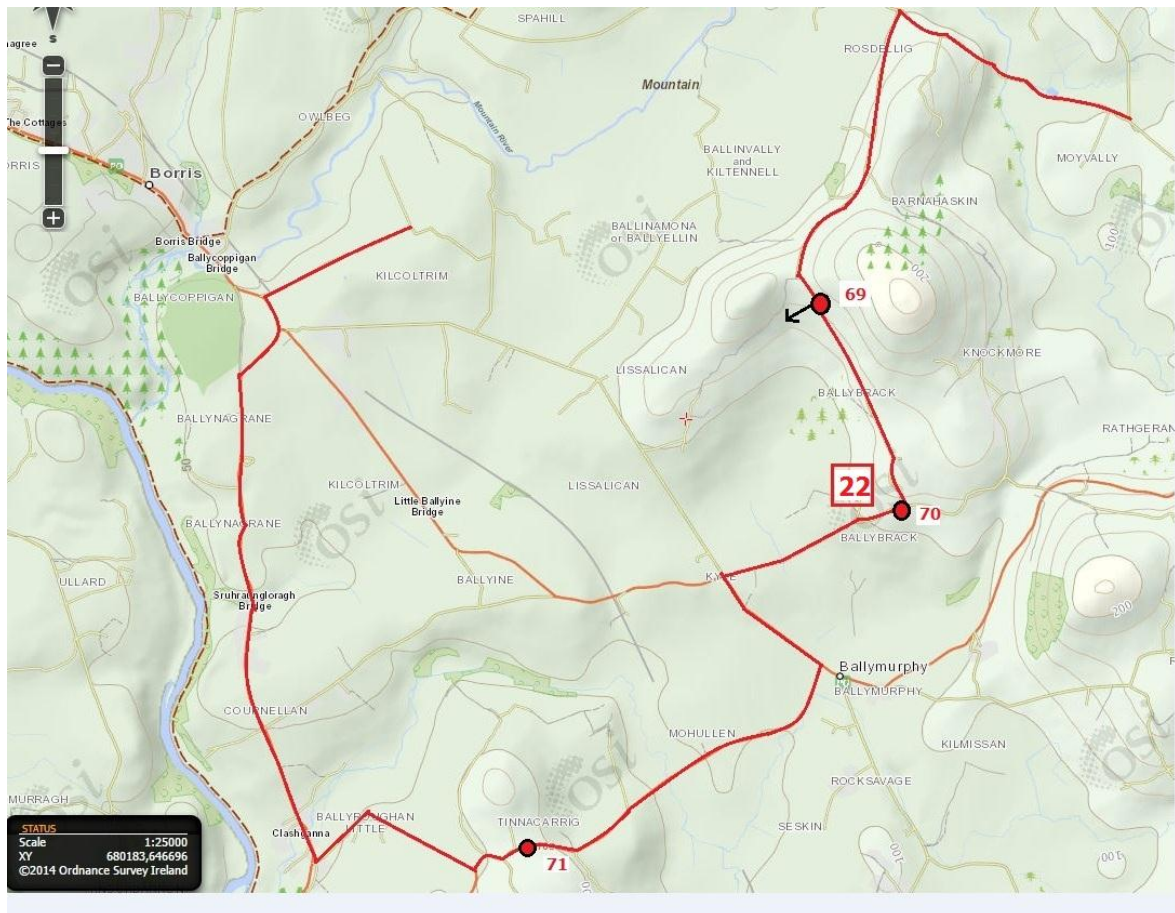
ID	Location	Route	Features	Quality	Comments
	Environs	Roads to Kilgraney with loop between Ballinkillin and Lorum	<p>Valley from Mt Leinster to Brandon Hill. Currane, Mt Leinster to Brandon Hill.</p> <p>Views southeast towards Slievebawn.</p> <p>Views and vista from Lorum Old Rectory</p> <p>View of the mountain range is on the unnumbered road leading off the R705, opposite the entrance to Kilgraney House (behind the old Kilgreaney School House) over the Ballinkillen village.</p> <p>Corries Cross looking east and south towards Mt Leinster</p>		unremarkable – the location offer expansive vistas of the plain to the north and the uplands to the south.

**Part Four: the locations of additional Scenic Routes 21 - 24 and Views and
Prospects 64 - 71**



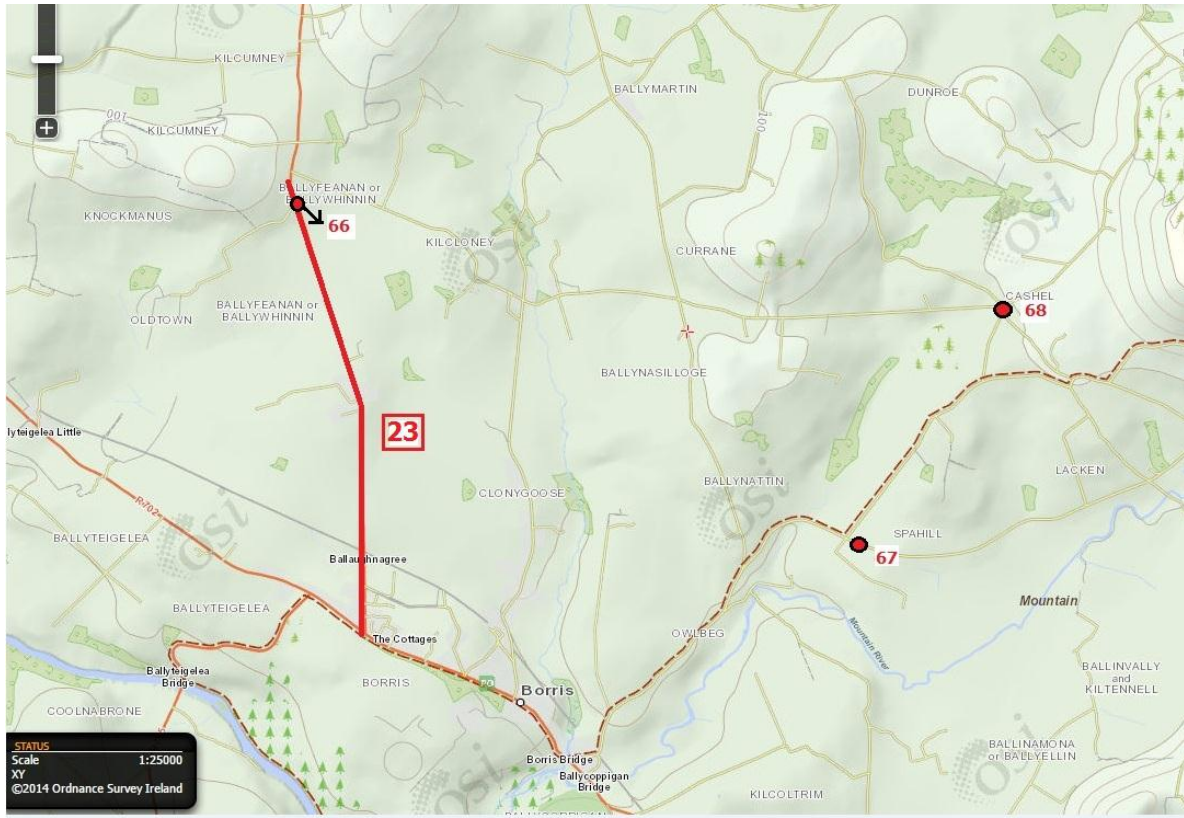
Additional Scenic Route 21

Carlow County Landscape Character Assessment and Schedule of Protected Views



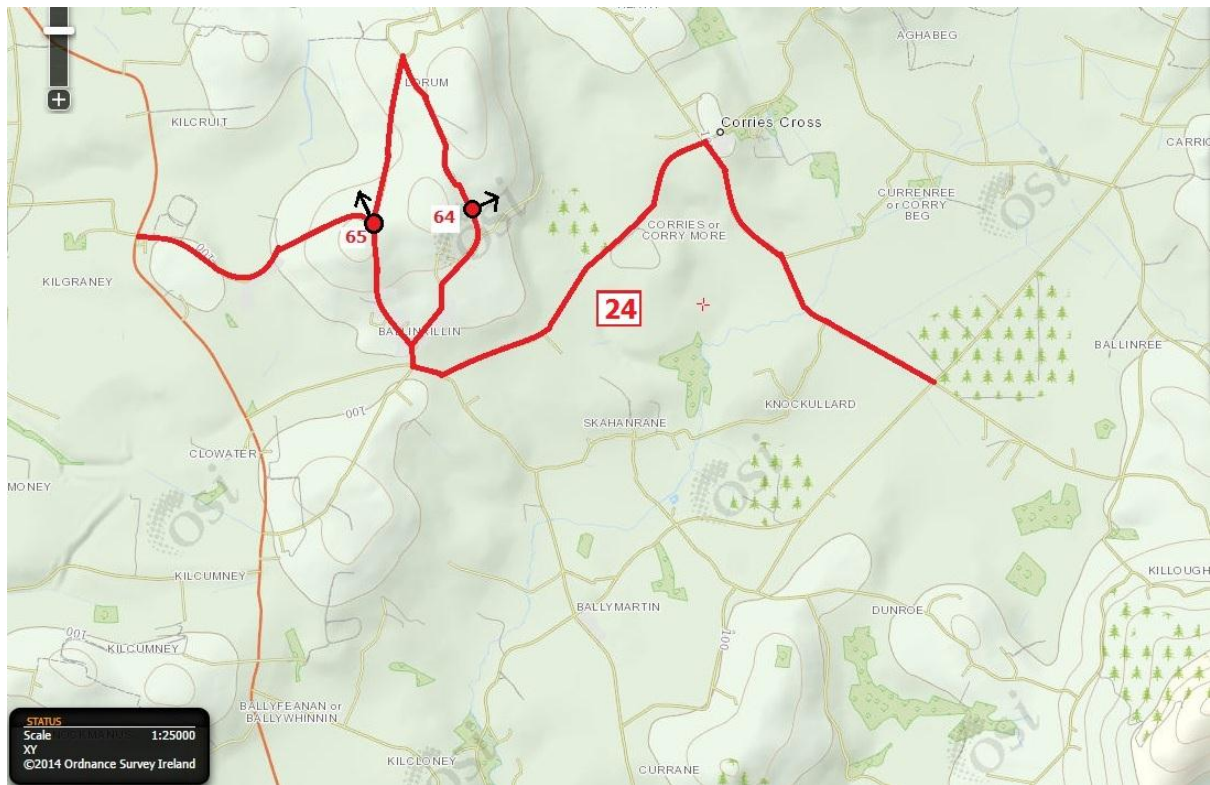
Additional Scenic Route 22 and Views 69 - 71

Carlow County Landscape Character Assessment and
Schedule of Protected Views



Additional Scenic Route 23 and Views 66 - 68

Carlow County Landscape Character Assessment and
Schedule of Protected Views



Additional Scenic Route 24 and Views 64 - 65

Part Five: County Carlow

Landscape Character Assessment

Carlow has an existing, adopted Landscape Character Assessment prepared in 2008 and adopted in 2009 as part of the existing Carlow County Development Plan. The following section reproduces the Description, Assessment and Strategic Objectives of the existing adopted LCA.

That work was commissioned to satisfy the following terms of reference and objectives:

Michael Cregan and Associates in association with Loci and Compass Informatics were commissioned by Carlow County Council to prepare a Landscape Character Assessment (LCA) report. Landscape Character Assessment is a process which describes and classifies landscapes in terms of their character, value, sensitivity, and capacity. The report provides the basis for informed decision making and policy formulation for developments in the landscape in County Carlow and for the conservation and protection of the landscape.

Objectives of the Report

Carlow County Council recognises its responsibility to manage lands in the County on a sustainable basis. Sustainable land management requires an understanding of the nature and components of the landscape that create distinctive character and an understanding of the capacity of different landscapes to accommodate different forms of development.

The objectives of the report are as follows:

- To provide an assessment of the County's landscape character, value and capacity that will provide direction in the review of the County Development Plan.
- To provide a deeper knowledge of the inherent character of County Carlow's landscapes that will provide a basis for determining what landscapes and landscape elements should be conserved/enhanced and what actions should be undertaken for their protection and enhancement.
- To provide the Council with guidance on policies and objectives that will ensure that changes arising from developments will be sympathetic to the County's landscape.
- To provide a basis for landscape planning and management consistent with principles of sustainable development.

The outputs of the study include:

- A landscape character and landscape type map of the County with accompanying images and descriptive text referring to the attributes, boundaries and key characteristics of each character area.
- A description of the key issues and trends deriving from land use demands, changes and threats in each of the landscape character areas and types.

- A land use capacity matrix for the County – highlighting vulnerable areas and elements in the context of pressures and trends with accompanying descriptive text.
- A set of recommendations for the management, protection and conservation of each landscape character area.

Legislation and Guidelines

The Local Government (Planning and Development) Act, 2000, Part II, S.10 (e) requires every Planning Authority to include objectives in its development plan ‘for the preservation of the character of the landscape where and to the extent that... the proper planning and sustainable development of the area requires it, including the preservation of views and prospects and the amenities of places and features of natural beauty or interest’. Ireland is a signatory to the European Landscape Convention¹ and must adopt national measures to promote landscape planning, protection and management of landscapes in Ireland. The Heritage Council policy on landscape is based on the terms of the European Landscape Convention.

Carlow County Council is currently reviewing its County Development Plan, which will include policies for landscape protection, conservation and enhancement. The Landscape Character Assessment will be incorporated as an appendix to the County Development Plan in order to provide guidance for the Development Plan period 2008 – 2014.

The Carlow Heritage Plan (2007) set out as an objective the commissioning of a landscape characterisation assessment (Cl.1.13).

The Landscape Character Assessment and the Development Plan will be informed by existing national, regional and local planning documents and policies. The approach taken to the assessment is in general conformity with the DoEHLG Guidelines on Landscape Character Assessment² and the Audit of Landscape Character Assessment undertaken by the Heritage Council in 2006³.

The landscape character assessment has taken account of the corresponding assessments that have already been undertaken for the adjoining counties of Kildare, Wicklow, Kilkenny and Wexford.

Landscape Character Areas

Principal Landscape Character Areas

The landscape assessment has identified four landscape character areas within County Carlow. This section gives a description of the main characteristic of each of the character areas and types.



Figure 5 Principal Landscape Character Areas

The Landscape Character Areas are:

- Central Lowlands
- River Slaney - East Rolling Farmland
- Blackstairs and Mount Leinster Uplands
- Killeshin Hills

Landscape Types

Within the landscape character areas generic landscape types have been distinguished as follows:

- Uplands
- Rolling Farmland
- Rolling Farmland with Plantations/ Woods
- Farmed Lowland Ridge
- Fertile Plain
- Landscape types
- Narrow River Valley
- Broad River Valley
- Hilly Farmland with Rough Grazing
- Built Up

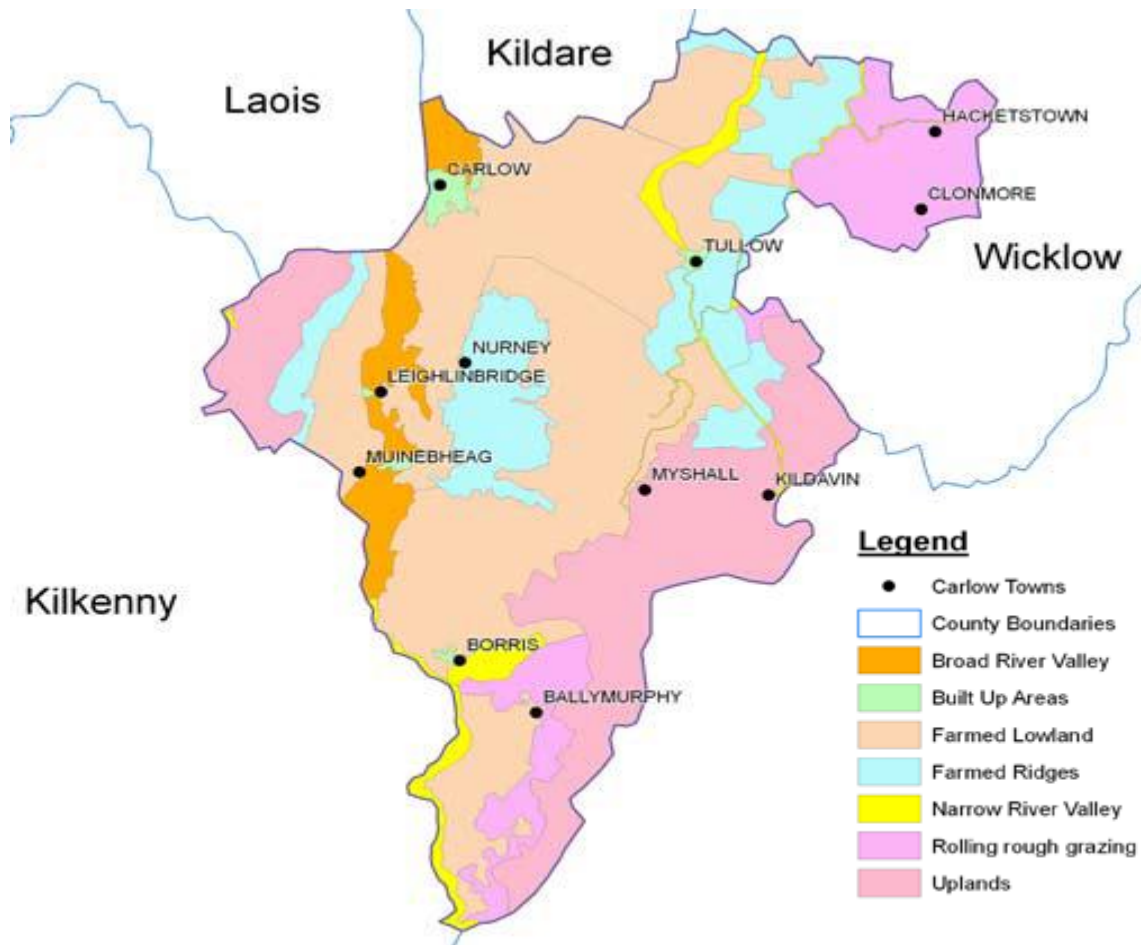


Figure 6 Landscape Types

It should be noted that with the exception of the Blackstairs Mountains, the variations in landscape type are subtle rather than distinctive. In the case of the Blackstairs Character Area, the lower slopes merge into the adjoining landscape character area as rolling farmland.

A Detailed description of each landscape type follows, which describes for each;

- Key Characteristics
- Description
- Geology, Soils and Topography
- Landcover
- Settlements
- Historical Landscapes
- Key Issues
- Recommendations

Central Lowlands Character Area

Key Characteristics

- Most of the County lies within this character area
- Landscape is level to gently rolling
- Predominantly fertile agricultural lands with medium to large fields defined by low trimmed hedgerows and occasional to frequent mature hedgerow trees.
- Open views and vistas, notably on ridge farmland.
- Low vegetation – grassland - and long distant views with a limited capacity to absorb developments unobtrusively.
- Extensive road network penetrating the character area.
- The character area contains most of the County's designated habitats and listed buildings.

Description

The central plain landscape character area occupies a substantial portion of the County and includes the County's major settlements. The landscape is primarily rural, with medium to quite large fields defined by well maintained and generally low hedges and occasional to frequent hedgerow trees. Since the 1950's field enlargement has been taken place to accommodate larger farm machinery, and has involved the removal of hedges and trees.

The boundary of the area is based on soil types and topography. Its historically determined land uses derive from the high fertility of the soil and the gentle topography.

A dense network of local roads traverses the area in addition to the N80 and the N9. There are isolated gravel and quarry workings in the area. Extraction of sand and aggregate has been taking place for some time in the area.

The following Landscape Types are in the Character Area: broad and narrow river valleys, farmed lowlands and farmed ridges. They provide a more accurate way of assigning sensitivity and capacity within the landscape character area.

Geology, Soils and Topography

The topography is underlain by limestone in the western portion of the area (flanking the Barrow River), and by granite in the east.

The limestone is generally pure and bedded, but some units of impure bedded limestone and muddy, often cherty limestones occur. The limestone rarely crops out in the character area and is blanketed by thick tills or stratified sands and gravels, as well as peat and alluvial sediments.

The area within the slightly higher, eastern portion of this landscape area is underlain by granite bedrock. This often results in rounded hills characterising the landscape, such as around Nurney, and

at Ballon Hill. With respect to subsoils, till derived from Lower Carboniferous limestone dominates the lowlands in the Barrow Valley area.

This till is basic in reaction and found over all the lowland undulations which are subglacial landforms. It is generally stony and blue-grey in colour, reflecting its source in the pure limestone rocks.

Till derived from granite occurs in the area east of this, blanketing the area with granite bedrock. This deposit is generally yellowish in colour, being heavily oxidized, and sandy in texture. It forms an acidic deposit.

A broad band of hummocky glaciofluvial sands and gravels flanks the Barrow River through this landscape area. These materials are often hummocky, and include the Ballymoon esker and its associated gravels, and host very well drained soils.

Elsewhere in this zone, the soils are dominated by grey brown podzolics but acid brown earths also occur in the granite till areas. Owing to the generally free-draining subsoil hosting them, they are well drained and highly suited to arable and grassland farming.

Landcover

The area is primarily a rural landscape. Landcover is intensively agricultural with a mix of grassland pasture and tillage. Shelterbelts as mature trees and copses are a common feature around farm buildings and when viewed from a distance the landscape can present the appearance of being well-wooded.

The amount of woodland in the Character Area is quite small. There are stands of conifers located in the south along the River Barrow Valley.

Many fields in the area have been enlarged by the removal of internal boundary hedges. Both the loss of hedgerows and field enlargement represents a decline in landscape condition.

Views within and from the Character Area are generally open and expansive except where restricted by buildings, plantations or ridges. Distant views include the Blackstairs, the Wicklow Mountains, the Castlecomer Plateau/ Western Uplands and Brandon Hill. The farmed ridges found in the north and west of the area are prominent features and can delimit views.

Settlements

60% of the County's population lives in the northern portion of the Character Area. The County's major settlements are also located in the Character Area. They include Carlow town, Tullow, Muine Bheag and Leighlinbridge.

Patterns of settlements and one-off houses in the rural areas are visible along roads leading out of Carlow and notably to the east and the south of Carlow Town.

There is a much lower density of occupation in the hinterlands of the area and away from the major settlements: For example, lands to the east of the N9 beyond Leighlinbridge and Muine Bheag have

the appearance of very low density rural settlements. Throughout the rural area there are individual dispersed houses and farm buildings.

Tullow and Muine Bheag are showing signs of poorly structured suburban expansion. There are also a number of compact villages in the area, which, in some instances, are showing signs of economic stagnation.

Urban expansion is a feature of Carlow Town and it includes one-off, mainly modern style house on rural roads leading into the town and a number of incongruous clusters of rural based housing estates.

Ecology and Habitats

The majority of the County's designated habitats are in the Character Area including the Barrow/Nore River Valleys, the Slaney River Valley, Ardristan Fen, Oak Wood, and Borris Estate.

Historical Landscapes

The majority of the County's important monuments are located in the Character Area including Duckett's Grove, Borris House, Oak Park, Leighlinbridge Castle ('the Black Bridge'), Valerian Bridge in Leighlinbridge, Carlow Castle, Browne's Hill Dolmen, a Standing Stone in Ardristan and 'Cloch an Phoill' at Aghade, Altamont Gardens, St. Mullins.

Tourism

The County Tourism Development Strategy locates the area for the purpose of tourism planning in the Carlow Urban Development Sub-Zone.

Most of the County's tourism infrastructure is located in the area. It lies within an easy day trip distance of Dublin and in the future may become part of the planned hinterland of the Greater Dublin Area particularly with the upgrading of the N9. It is considered for tourism purposes to be suitable for higher intensity developments combining recreational activities such as golf (with accommodation), conference facilities and shopping. The focus of the development would be concentrated on improving the attractiveness of Carlow Town.

Carlow Leader and Carlow County Council have jointly produced a feasibility study of Heritage Drives in the County. Three drives are proposed and two of them pass through the Central Lowlands. These are 'a Megalithic Heritage Drive' visiting resources in Tullow, Nurney and other locations, and 'a Barrow Heritage Drive' that would visit resources in Carlow Town, Old Leighlin, Leighlinbridge, Borris and Muine Bheag.

Key Issues

- Development pressure on the countryside particularly in the vicinity of Carlow Town and the other centres. Impact on water supplies.
- Degrading of the typical landscape character through the removal of internal hedgerows.
- Over management of roadside hedges.

- Degrading of the typical landscape character through the construction of modern one-off houses in the countryside, many of them two storied with prominent elements in an open landscape and lacking any connection to the characteristic styles of rural houses in the County.
- Erosion of the landscape setting of existing settlements by inappropriate developments.
- Tourism and recreation pressure.

Recommendations

- Maintain the existing grain of the landscape with its well-developed pattern of fields, hedgerows, trees and shelterbelts.
- Review the hedge maintenance regime. Overcutting reduces species richness and consequently, their contribution to biodiversity.
- Discourage the replacement of hedgerow boundaries with wire fences.
- Encourage the use of native and indigenous planting in new developments to integrate buildings into the surrounding landscape. Compile a list of suitable trees and shrubs for planting in the County.
- Small villages and scattered residences and farm buildings are the typical rural settlement pattern. New development should be monitored to protect the integrity of the settlement pattern. Continuous ribbon development along the roads leading into the major settlements should be discouraged. Likewise scattered small clusters of residential developments in rural areas should be discouraged. The expansion of villages by developments on their edges or by sporadic development should be discouraged as they erode the integrity and character of the villages.
- The use of traditional styles, materials and colours in new developments should be encouraged.
- New developments should not be sited in prominent locations such as ridges and areas with open exposed vistas.
- Infrastructure for tourism should be carefully sited and in sympathy with the character of the landscape.

River Slaney – East Rolling Farmland Landscape Character Area

Key Characteristics

- Lies to the east of the narrow valley of the river Slaney.
- Undulating landscape and higher elevation than central plain.
- Backdrop of Wicklow Mountains with quite significant peaks (for example, Keadeen 653m and Lybagh 646m).
- Lower soil fertility.
- Small fields bounded by low hedgerows including gorse.
- A number of distinct prominences give distinct ‘character’ to the area. Constable Hill and Eagle Hill near Hacketstown.
- Forestry plantations south of Hacketstown and on border with County Wicklow.
- Generally open views but can be delimited by slopes, prominences and ridges.

Description

The Slaney - East Rolling Farmland Character Area is located in the northeast corner of the County to the east of the River Slaney Valley.

While there is no definite demarcation line between the central plain and the River Slaney character area, there is a gradual alteration in landscape character.

The lands ascend to a somewhat higher altitude on the approach to Hacketstown and on to the border with County Wicklow to the north and east, and County Wexford to the south. These lands are in a 150-260m OD elevation band.

The presence of the Wicklow Mountains is a dominating backdrop to the area with quite high mountains to the immediate east. The mountains delimit the vista to the north and east.

While the undulating topography, hills and forestry plantations can obscure views, there are strong and distant vistas available from ridgelines in many locations and these are more prominent than the restricted viewing positions.

The character area contains the following landscape types: rolling rough grazing, farmed ridges, farmed lowland, and narrow river valleys. The narrow river valleys are associated with a more enclosed landscape as are the farmed lowlands. Higher levels of visibility occur on rolling rough grazing and farmed ridges.

Geology, Soils and Topography

The bedrock in this area is wholly comprised of granite, which is overlain with thick tills and localised pockets of sands and gravels in the river valleys, as well as some peat and alluvial deposits. The landscape is characterised by rounded granite dome-shaped hills, and interspersed rolling topography.

Soils in the area include well drained, acidic, brown earth soils, and pockets of poorly drained gleys. The change in elevation and soil type is reflected in a change in natural vegetation with the appearance of gorse in clumps and along field boundaries.

Landcover

Fields are smaller and more compact than those in the central plain. Lands are generally undulating. There are a number of distinctive hills in the area, notably Eagle Hill and Constable Hill to the south of Hacketstown, which confer a distinct identity on that part of the County.

There are a number of large forestry plantations to the south of Clonmore on the border with County Wicklow. Landcover is agricultural (primarily grassland), merging into rough grazing at higher elevations.

Settlements

Hacketstown is the main centre serving the Character Area. Clonmore is a village in the south of the area.

Individual houses and farm buildings are located along the extensive road network. Due to the undulating topography and the hedgerows, these are generally absorbed into the landscape and do not visually intrude. In addition their density is relatively low. The landscape has, in consequence, a strong sense of 'rurality'.

Ecology and Habitats

Baggot's Wood, the Derreen River and the River Slaney Valley are designated habitats.

Historical Landscapes

Rathgall Stone Fort, the rich heritage of Clonmore including Bullaun Stone, High Cross and the Castle, Rathvilly Motte, Haroldstown Portal Tomb, and Huntington Castle at Clonegal.

Tourism

The County Tourism Development Strategy locates the area in the 'Tullow Rural Leisure Development Sub Zone' and shares characteristics in terms of accessibility and infrastructure with the Carlow Urban Development Sub Zone.

The zone straddles the Central Plain and the River Slaney – East Rolling Farmland Character Area. Recreational activities for development in the area include walking and angling, with the River Slaney as the main focus.

The area contains some important heritage sites, as noted above, all of which require improved facilities for information and interpretation on site. The Leader Heritage Drive Strategy would include visits to Rathgall Stone Fort and Clonmore.

Key Issues

- Housing development pressures in the countryside adjoining Hacketstown and villages in the Area. Impacts on water quality.
- Over management of roadside hedges.
- Degrading of the typical landscape character through the construction of modern one-off houses in the countryside, many of them two storied with prominent elements in an

open landscape and lacking any connection to the characteristic styles of rural houses in the County.

Recommendations

- Conserve character of land pattern and landform typified by small fields defined by hedges and occasional stone walls.
- Review the hedge maintenance regime. Overcutting reduces species richness and consequently, their contribution to biodiversity.
- Encourage the use of native and indigenous planting in new developments to integrate buildings into the surrounding landscape.
- New development should be monitored to protect the integrity of the settlement pattern. Continuous ribbon development along the roads leading into the major settlements should be discouraged. Likewise scattered small clusters of residential developments in rural areas should be discouraged. The expansion of villages by developments on their edges or by sporadic development should be discouraged as they erode the integrity and character of the villages.
- The use of traditional styles, materials and colours in new developments should be encouraged.
- New developments should not be sited in prominent locations such as ridges and areas with open exposed vistas.
- Infrastructure for tourism should be carefully sited and in sympathy with the character of the landscape.
- New forestry plantations may, in the future, be developed on privately owned lands. Their configuration should not be geometric and should form irregular blocks within established field boundaries.
- A river catchment conservation and management plan should be prepared for the River Slaney and River Dereen.

Killeshin Hills Landscape Character Area

Key Characteristics

- Rural character with few settlements.
- Distinct prominence of Castlecomer Plateau forms a backdrop to the area and separates the County from Kilkenny.
- Mixture of grassland, rough grazing, and forestry plantations at higher elevations.
- River Barrow forms eastern edge of area.
- Isolated stone quarries and lime workings have left a mark on the landscape.
- Open views and vistas with extensive views across the entire County from ridges and from the Castlecomer Plateau.

Description

This character area lies on the western side of the County on the border with Counties Kilkenny and Laois and a short segment of County Kildare.

The area is bounded to the east by the river Barrow Valley with the N90 skirting along the east side of the valley. The lands adjoining the river valley are gently undulating hills which ascend steeply to uplands adjoining County Kilkenny: the Castlecomer Plateau. There are extensive panoramic views of the entire County to be had from the eastern slopes.

The character area contains the following landscape types: uplands, farmed ridges, farmed lowlands and broad river valley.

Geology Soils and Topography

This area is underlain almost wholly by bedrock of Namurian shale and sandstone. It corresponds to the eastern flank of the Castlecomer Plateau, which extends into this portion of northwest County Carlow.

The plateau area is generally characterised by a landscape with bedrock at a shallow depth, and the till and peat subsoils of the ridge area are generally no more than 5m deep. Often, bedrock is within 1m of the surface on the ridge summit and shoulders.

The till on the ridge is dominated by clay subsoil, which means that poorly drained surface water gley soils dominate. The drainage density in this area is therefore higher than in the rest of Carlow, as runoff dominates and infiltration rates are low.

Peat soils occur in areas of blanket peat that have developed in the hollows on top of the ridge.

Alluvial soils occur discontinuously in narrow bands along the streams running off the ridge.

Landcover

The character area has a strong rural ambience with no significant urban settlements/ villages. It is largely an agricultural area with a tapestry of small to medium scale fields in grassland on the lower ground merging into rough grazing and plantation forestry at higher elevations. Boundaries are

defined with a mixture of hedge, stone walls, wire fences and grassy banks. There are isolated stone quarries and lime workings.

Settlements

There are no significant urban settlements in the area. Farm buildings tend to be concealed among the rolling hills and enclosed with shelterbelts. There is a scatter of one-off modern houses along the road network. There are also quite incongruous small housing estates in rural areas.

Ecology and Habitats

Ballymoon Esker, Cloghristick Wood and the River Barrow are designated habitats.

Historical Landscapes

St. Lazerian Cathedral in Old Leighlin, Ballymoon Castle, and Killeshin Church

Tourism

In the tourist development strategy, the Killeshin Hills Character Area is located adjoining the River Barrow Corridor Sub-Zone. The strategy does not identify any specific tourism targets for the area.

Key Issues

- Development pressure on the countryside for single houses.
- Degrading of the typical landscape character through the removal of internal hedgerows.
- Over management of roadside hedges.

Recommendations

- Conserve character of land pattern and landform typified by small fields defined by hedges and occasional stone walls.
- Review the hedge maintenance regime.
- Encourage the use of native and indigenous planting in new developments to integrate buildings into the surrounding landscape.
- The layout of new forest plantations should not be geometric and should form irregular blocks within established field boundaries.

Mount Leinster/ Blackstairs Landscape Character Area

Key Characteristics

- Steep slopes ascending to mountainous landscape.
- Rough grazing on slopes merging into grazing and arable lands at lower altitudes.
- Small hedge bound fields with occasional mature trees.
- Settlements as small villages and individual dwellings scattered along roads and country lands.
- Shelterbelts are a strong feature around many of the dwellings.
- Panoramic vistas from higher slopes across the County.
- Forestry plantations particularly in northern part of character area.
- South Leinster Way traverses across northern slopes from Kildavin to Borris.

Description

The Mount Leinster/ Blackstairs Landscape Character Area is situated on the eastern side of the County along the border with County Wexford.

It is dominated by the uplands of the Blackstairs Mountains and Mount Leinster, which extend as a distinct ridgeline for c. 25km northwards from the border with Wexford. Mount Leinster is largely located in Wexford.

The western slopes are however in County Carlow. The slopes of the mountain descend westwards on to an undulating landscape, which converges with the landscape of the Central Lowlands landscape character area.

The landscape character area contains the following landscape types: uplands/ mountains, rolling rough grazing, farmed ridges, narrow river valley.

Geology, Soils and Landform

The majority of this area is underlain by granite, but Ordovician Metasediments of schist and sandstone occur between Clonegal and Myshall. This area is dominated by the Blackstairs Mountains and their lower slopes, which comprise till and scree deposits.

There are extensive panoramic views across the County to be obtained from higher roads in the area, notably in the vicinity of Slievebawn.

Below the hills the landscape is more intimate, with smaller fields partially enclosed by rolling topography. This in some sense delimits the extent of views. Here, the till in the area is dominated by granite, again with some till derived from Ordovician schists and sandstones around Clonegal and Myshall.

Soils include pockets of intact and cutover blanket bog on the Blackstairs Mountains, with acid brown earths dominating on the lower slopes and on the till hills. Alluvial soils occur along stream channels in narrow bands.

Landcover

The higher slopes of the Blackstairs are essentially unproductive lands with a thin covering of soil and blanket bog, and heather type vegetation cover.

The lower slopes at c. 80m to 200m OD are in rough grazing merging into arable lands and grasslands. The fields are small and bounded by a mixture of hedges and stone walls with occasional trees.

Shelterbelts are a common feature around dwellings and farmhouses, which are dotted along roads and laneways throughout the character area.

Forestry plantations are extensive in the northern sector of the character area, on the slopes of Croaghan and Kilbrannish Hill. There are smaller plantations further south.

Settlements

There are a number of small and intact villages in the area including Glynn, Ballymurphy and Miseal (Myshall). There are no major settlements. There is no sign of expansion or significant alteration to those villages. Individual house and farm buildings are scattered through the area. Because of the undulating landform, these buildings tend to be visually unobtrusive.

Ecology and Habitats

The Blackstairs, John's Hill and the River Slaney are designated habitats.

Historic Monuments

Adelaide Memorial Church in Miseal (Miseal is on the boundary between the Central Lowlands LCA and the Blackstairs LCA). Burial Ground at Kildavin

Tourism

The County Tourism Development Strategy designates the area as the 'Blackstairs Wilderness/ Nature Sub Zone'.

It is seen as having the best natural tourism assets of the County (in addition to the Barrow Valley): 'a peaceful, relaxing, rural retreat...very attractive villages, a strong heritage and wide range of outdoor activities for tourists'.

The study identifies a need for additional accommodation on a small scale and intimate character and proposes Clonegal as a key centre.

The Wicklow Way terminates in Clonegal. The Leader project proposes a Mount Leinster Heritage Drive, which would include part of the landscape character area.

Key Issues

Key issues emerging from the landscape character assessment are:

- Development pressure in the countryside for single houses.
- Threat to the landscape setting of existing settlements.
- The impact of plantation forestry and infrastructural developments.
- Tourism and recreation pressures.

Recommendations

- It is the most important area in the County for scenery and 'wilderness'. Conserve character of land pattern and landform typified by small fields defined by hedges and occasional stone walls. Discourage their replacement with wire fences.
- Encourage the use of native and indigenous planting in new developments to integrate buildings into the surrounding landscape.

- New development should be monitored to protect the integrity of the settlement pattern. The expansion of villages by developments on their edges or by sporadic development should be discouraged as they erode the integrity and character of the villages.
- The use of traditional styles, materials and colours in new developments should be encouraged.
- Protect views and vistas by ensuring that new developments are not inappropriately located.
- Infrastructure for tourism should be carefully sited and in sympathy with the character of the landscape.
- New forestry plantations may, in the future, be developed both on public and on privately owned lands. Their configuration should not be geometric and should form irregular blocks within established field boundaries.
- A river catchment conservation and management plan should be prepared for the River Slaney within the Character Area.

Landscape Capacity and Sensitivity in the Landscape Character Areas

Central Lowlands

The Central lowlands character area is deemed to be moderately sensitive to development. It has capacity to absorb most types of development subject to the implementation of appropriate mitigation measures.

This area encompasses river valleys and ridges that are, however, more sensitive to development than other locations within the area. These include the Barrow, Slaney and Douglas River Valleys.

The area is considered to have a low potential capacity to absorb plantation forestry or industrial development.

Although the area is deemed to have a medium potential capacity to absorb rural housing and urban expansion, such developments must demonstrate an ability to be integrated with their surroundings.

It will also be an objective of the Council to prepare Local Area Plans for existing settlements that will protect the landscape at the interface of rural and urban areas from inappropriate forms of development.

Approaches to towns and villages will be afforded similar protection and due regard will be given to the protection of views from settlements into the surrounding landscape, whether or not a Local Area Plan has been prepared.

Whilst this area may be deemed to have a relatively high potential capacity to accommodate wind farming, it is acknowledged that the generally low-lying character of the area may reduce its suitability for wind turbines in terms of its wind resource.

River Slaney - East Rolling Farmlands

The Character Area is classified as robust with medium sensitivity to change depending on the specific landscape type and development.

Much of the landscape character is relatively intact and is representative of a well managed agricultural landscape.

There is potential for the disturbance of landscape character through the construction of inappropriately sited and designed one-off housing in the countryside and through inappropriate or poorly planned suburban expansion in the vicinity of Hacketstown and the villages in the area

Subject to an appropriate framework plan, there is scope for moderate expansion of Hacketstown. The tourism strategy identifies the area as capable of expansion in the sector with the provision of facilities and accommodation.

The development of golf courses would require careful siting and design as their smooth and managed appearance can conflict with the texture and pattern of the landscape.

The potential capacity is rated as follows:

It has moderate potential capacity to accommodate farm buildings because of its low sensitivity and because of the undulating topography.

Moderate to high potential capacity to accommodate coniferous plantations and extractive industry including wind turbines and biomass facilities, subject to siting conditions and appropriate mitigation measures.

High capacity to accommodate appropriate tourism developments. Reference is made in the Tourism Strategy to the potential for developing golf facilities. The siting of golf courses in particular and to a lesser degree associated buildings, would require particular care because of the scale and uniform texture of the golf courses. They would represent an erosion of landscape character if they were visible over a wide area.

Low capacity to accommodate industrial development, due to its rural and upland location and its relative visual exposure.

Moderate capacity to absorb extractive industry and wind farming.

Moderate capacity to accommodate overhead cables and transmission masts except in locations where there are open vistas and long distant views, for example south of Clonmore.

Killeshin Hills

The area is almost entirely a rural agricultural landscape with a moderate level of sensitivity and moderate potential capacity to absorb different types of development.

The east-facing slopes enjoy sweeping panoramic views over most of the County. Due to this upland character and relative exposure, it has a low potential capacity to absorb rural housing or industrial development.

Conversely, it has a high capacity to absorb agriculture and tourism-related activities. There are existing forestry plantations within the area and there is potential for further such development contiguous with existing plantations.

Subject to appropriate mitigation measures there may also be moderate scope to absorb extractive industry and wind farming.

The area has high potential capacity to absorb farm developments and a limited level of rural housing with appropriate conditions relating to siting and design. This would apply selectively to farmed ridges and farmed lowland.

As noted above, the upland areas are open to view from a wide area within the County and would have a much higher level of sensitivity where housing would be more exposed to view.

The area has high potential capacity to absorb tourist facilities.

The type of tourism which would take place would be associated with low impact countryside recreation for which small scale facilities would be required.

Overhead cables and masts would have to be selectively located, for example on farmed secondary ridges where the primary ridge would form the backdrop, or in the lowland farming area.

Likewise wind turbines could be similarly sited subject to appropriate conditions relating to mitigation measures.

Mount Leinster/ Blackstairs Uplands

In terms of natural attributes and scenery, this character area is the most important in the County and is as such highly sensitive to change. This particularly applies to the uplands/ mountains whereas the farmed ridges and rolling rough grazing types would be moderately sensitive.

The area has a low potential capacity to accommodate rural housing. The area could be potentially attractive to second home buyers from outside the County, by virtue of its remoteness and attractive scenery. This could result in a proliferation of unsuitable development with a cumulative negative impact on the landscape. It would also reduce the sense of 'wildness' of the area, which is one of its most important attributes.

There is low potential capacity to accommodate small housing estates in villages. The villages are generally compact and intact. Expansion would disrupt their integrity and their intimate connection with the surrounding countryside.

There is moderate capacity to absorb forest and biomass development, particularly in the northern part of the area where plantations are already established.

There is low capacity to absorb wind turbines, overhead cables and masts, particularly in the upland areas where they would detract from the scenery and visitors' experience of 'wilderness'. Possible exceptions to this may include limited plantation forestry and tourism-related activities, both passive and active. In both cases, applications for such development should be treated on their merits and mitigation measures may be required.

Applications for other forms of development in this area should be discouraged, and any such applications will be required to demonstrate how they will integrate with their surroundings so as to avoid any negative impact on the landscape. In particular, this will involve restricting urban generated rural housing.

Where one-off houses are considered they will be required to be carefully sited and screened with suitable planting. Inappropriate or incongruous building forms, architectural styles (e.g. 'sub-urban'), colours and materials or 'exotic' planting should be discouraged.

Strategic Policy

Summary of key issues

In summarising the key issues and recommendations relating to the landscape character areas, a small number of themes are prominent. These are:

- Development pressures on the countryside particularly in the vicinity of Carlow town and Tullow.
- Field enlargement through internal hedge removal.
- The over management of hedgerows.
- One-off houses in the countryside that are prominently located in open or ridged landscapes.
- Design of one-off houses without reference to the local vernacular in terms of style, detailing and materials.
- Ribbon development (as noted in Local Area Plans).
- Low density clusters of residential development inappropriately located and with poor standards of layout and design (as noted in Local Area Plans).

Sectoral recommendations

The following should be considered in regard to certain sectors:

Infrastructure and industry

Careful site selection and detailed mitigation to minimise impacts is a fundamental prerequisite to integrating developments into the landscape.

Careful planning of infrastructure networks is necessary to avoid damage to the landscape and to landscape elements and in particular to avoid the cumulative impacts that can arise when infrastructural clustering of structures occurs.

Biomass energy production involves the use of single species regimes at a large scale. Their siting and disposition requires careful attention, given their high level of visibility in the County Carlow landscape.

Likewise biomass production involves large scale development which is inevitably visually prominent. Mitigation requires location, layout and screening to be addressed.

In general, wind turbines should be sited away from higher scenic or otherwise valued landscapes, and positioned where their impacts will be considered acceptable. Criteria for the development of wind energy are subject to a separate study.

Applications for quarrying should be accompanied by a detailed landscape plan setting out mitigation measures with particular reference to land grading and screen planting.

Tourism and recreation

The provision of tourism facilities should enhance visitors' experience and requires careful siting and attractive design to integrate the development with the countryside and with the local vernacular.

Rivers

River catchment plans should be prepared to develop river corridors as recreational and tourism amenities in addition to developing management strategies for the control of urban and agricultural run-off. The plans would also take account of requirements for corridor design to prevent bank erosion, and to protect wildlife etc.

Farming and Forestry

Reference has been made to the integral part the hedgerow system plays in the County's landscape character. Policies for their protection and enhancement would be best developed by means of a County hedgerow study.

Forestry is not a significant element in the County's landscape and the situation is unlikely to alter in the foreseeable future. However, there is a possibility that landowners may avail of forestry grants to develop small plantations. These should be carefully laid out to sit in the natural contours and boundaries of the landscape and should avoid rigid geometrical patterns that would not be in harmony with the grain of the landscape.

Summary of Recommendations

- The existing grain of the countryside should be protected.
- The hedge maintenance regime should be reviewed. This could be achieved by means of a County hedgerow study. This type of study has been conducted in other counties with advice from the Heritage Council.
- Native or indigenous trees and shrubs should be used in development works and for mitigation large scale schemes.
- Developments which dilute or weaken the edge of settlements should be discouraged. They weaken the integrity of the County's villages. Such developments occur as ribbon development, as low density residential developments, and as inappropriately sited industrial or retail developments. In this respect the Planning Authority will have regard to best practice in relation to the location, siting and design of houses in the landscape. New developments should not be sited in prominent and highly visible locations. The Planning Authority will continue to encourage the coordinated and planned consolidation and expansion of existing settlements through the preparation of Local Area Plans.
- The use of traditional styles of building, materials and colours should be encouraged. Where modern designs and materials are considered, they should be carefully sited having regard to topographical and landscape features and vernacular traditions of building.

Strategic policy response

Landscape considerations will be an important factor in all land use policy for the County

The quality of Carlow’s landscape and its distinctive local characteristics will be conserved and enhanced. In providing for new development, particular care shall be taken to conserve, and where appropriate, to restore and enhance those features that contribute to local distinctiveness including:

- The setting of settlements, buildings and historic monuments within the landscape,
- The historic patterns of field boundaries, hedgerows, and other wild and semi-wild vegetation,
- The special qualities of rivers,
- Historic demesne landscapes, and
- Skylines, ridges and hill features, including prominent views.

In particular, land use policy and development management will have regard to the capacity of the landscape to absorb different types of land use, as indicated in the following land use capacity matrix:

Land use type	Mount Leinster - Blackstairs	Central lowlands	River Slaney - East Rolling Farmland	Killeshin Hills
Agriculture	Low	High	High	High
Rural housing	Low	Moderate	Low	Low
Urban development/ expansion Low Moderate Moderate Low	Low	Moderate	Moderate	Low
Forestry plantation	Moderate	Moderate	Moderate	Moderate
Tourism related activity*	High	High	High	High
Industrial development	Low	Low	Low	Low
Extractive industry	Low	Moderate	Moderate	Moderate
Wind farming	Low	Moderate	Moderate	Moderate

General policy objectives are summarised in the following table:

LCA	Policy objective
<p>Central lowlands</p>	<p>Conservation, restoration and enhancement of the existing landscape character.</p> <p>New developments to maintain integrity of landscape character area though careful location, siting and design.</p>
<p>River Slaney</p>	<p>Balance conservation with enhancement of the existing landscape character.</p> <p>New developments to maintain integrity of landscape character area though careful location, siting and design.</p> <p>Forests to respect the grain of the landscape. River conservation plans to be prepared for the Slaney and Derreen Rivers.</p>
<p>Killeshin Hills</p>	<p>Balance conservation with enhancement of the existing landscape character.</p> <p>New developments to maintain integrity of landscape character area though careful location, siting and design.</p> <p>Forestry to respect the grain of the landscape</p>
<p>Mount Leinster/ Blackstairs Uplands</p>	<p>Balance conservation with enhancement of the existing landscape character.</p> <p>New developments to maintain integrity of landscape character area though careful location, siting and design.</p> <p>Forestry to respect the grain of the landscape.</p> <p>Tourism development and infrastructure to be carefully sited designed and development impacts to be monitored</p>

Part Six: County Carlow

Schedule of Views, Prospects and Scenic Routes

Carlow has an existing, adopted schedule of Views, Prospects and Scenic Routes as part of the existing Carlow County Development Plan. The following section reproduces the existing adopted schedule of Views, Prospects and Scenic Routes

That work was commissioned to satisfy the following terms of reference and objectives:

Michael Cregan and Associates in association with Compass Informatics have been commissioned by Carlow County Council to prepare a Views and Prospects report for the County. The report is guided by a Landscape Character Assessment of the County.

The assessment identified four distinct landscape character areas in the county.

The report consists of a listing of views, prospects and scenic routes in the county which merit protection because of their inherent quality. The listing provides a basis for decision making and policy formation for developments in the landscape.

Objectives of the Report

Carlow County Council recognises its responsibility in managing the county's landscape in a sustainable manner. The County Landscape Character Assessment has provided an understanding of the components that shape the unique landscapes of the county. Certain of these landscapes are special or unique because of their scenic / aesthetic attributes. The report identifies these landscapes and locations from which they are prominently visible. Their identification provides a tool for making development decisions which will acknowledge the importance of protecting these assets and thus maintaining the overall integrity of the county's landscape.

The objectives of the report are as follows:

- To identify and compile a list of the County's most important views, prospects and scenic routes.
- To provide the Council with a mechanism for formulating policies and objectives that ensure that changes arising from developments will be sympathetic to these views and scenic routes, and thus contribute to the protection of the character of the county's landscape.
- To contribute to the process of landscape planning and management consistent with principles of sustainable development.

The outputs of the study will consist of:

- A list of important views, vistas and scenic routes with an accompanying description of their precise location, extent, and orientation, and their particular attributes.
- A map showing the location of the views, prospects, and scenic routes.

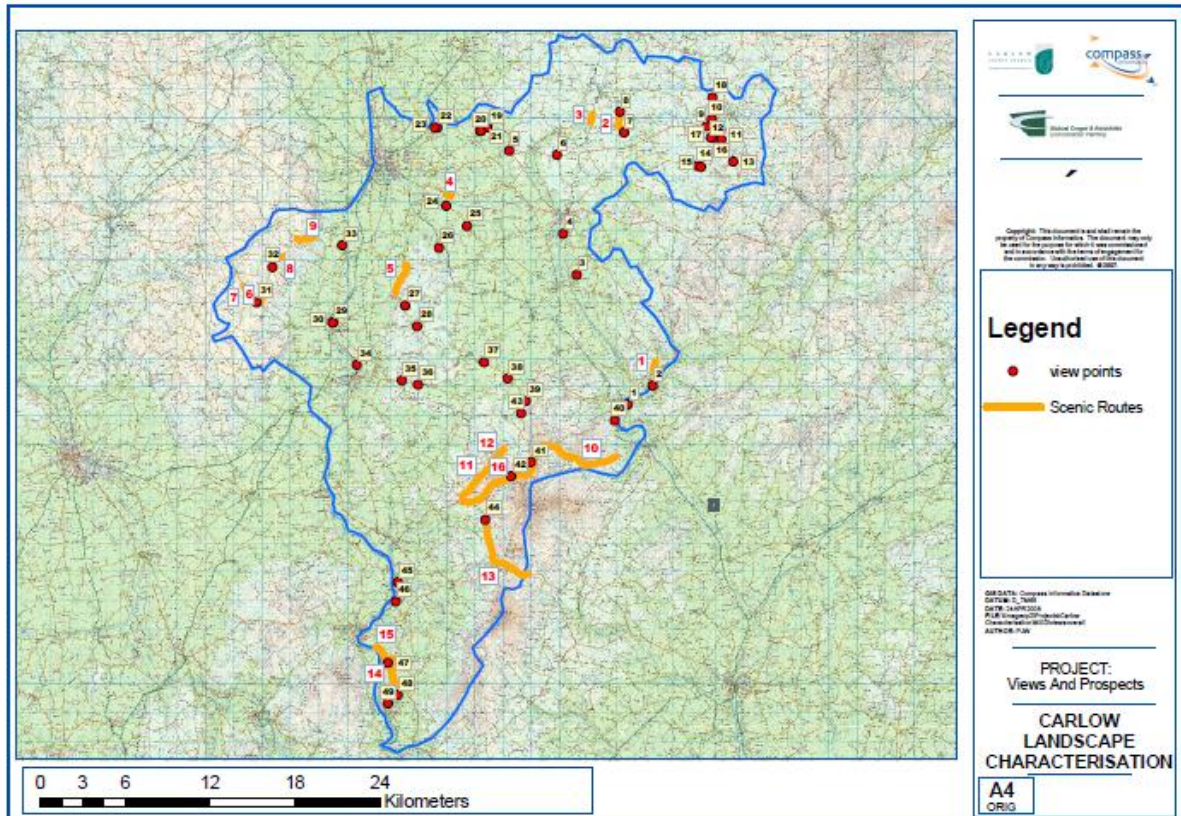
Legislation and Guidelines

The Planning and Development Act 2000 contains provisions for the preservation and conservation of landscape. Section 10 requires Local Authorities to include the following objectives in their Development Plans:

(2)(e) 'the preservation of the character of the landscape where, and to the extent that, in the opinion of the planning authority, the proper planning and sustainable development of the area requires it, including the preservation of views and prospects and the amenities of places and features of natural beauty or interest'.

Section 10 of the 2000 Act gives Local Authorities the discretion to include objectives in their Development Plans for the protection or preservation of their landscapes.

Existing Views and Prospects are shown in the general map below – proposed additional Views and routes have been mapped in detail in Part Four.



Carlow County Landscape Character Assessment and Schedule of Protected Views



Copyright: This document is and shall remain the property of Compass Information. The document may only be used for the purpose for which it was commissioned and its use for other purposes without the agreement of the commissioning authority is prohibited. © 2007

Legend

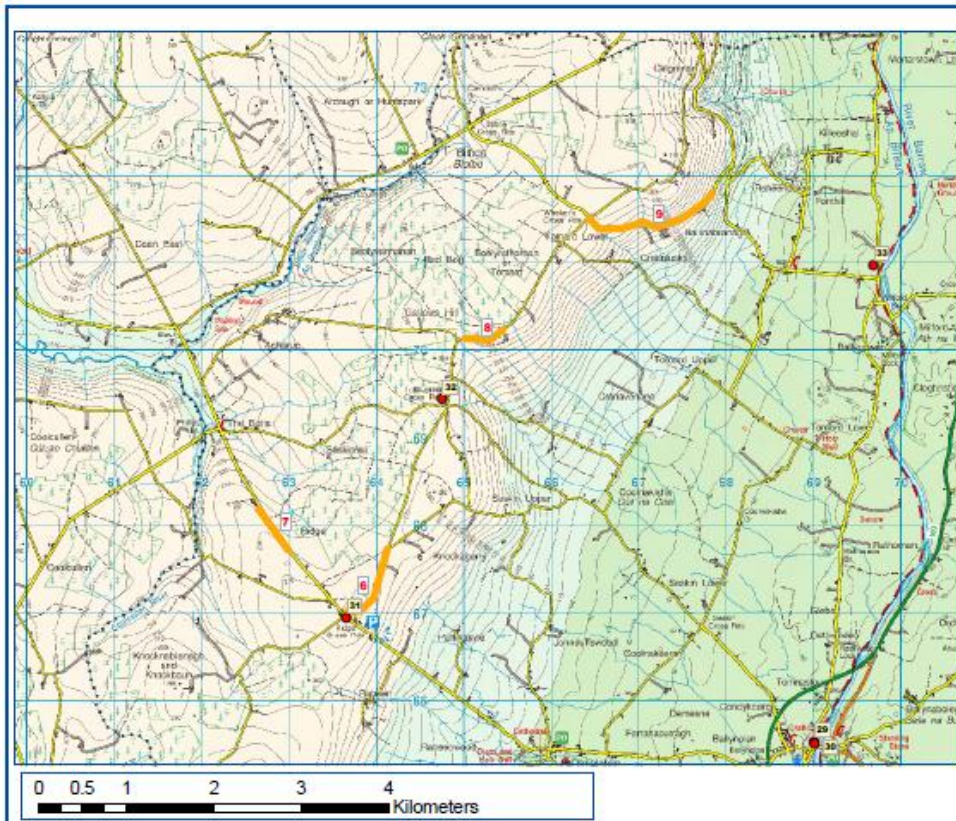
- view points
- Scenic Routes

DATE: 12/01/2010
FILE: ViewsAndProspectsCarlow
CHARACTERISATION/Characterisation
AUTHOR: JAW

PROJECT:
 Views And Prospects

**CARLOW
 LANDSCAPE
 CHARACTERISATION**

A4
 ORIG



Copyright: This document is and shall remain the property of Compass Information. The document may only be used for the purpose for which it was commissioned and its use for other purposes without the agreement of the commissioning authority is prohibited. © 2007

Legend

- view points
- Scenic Routes

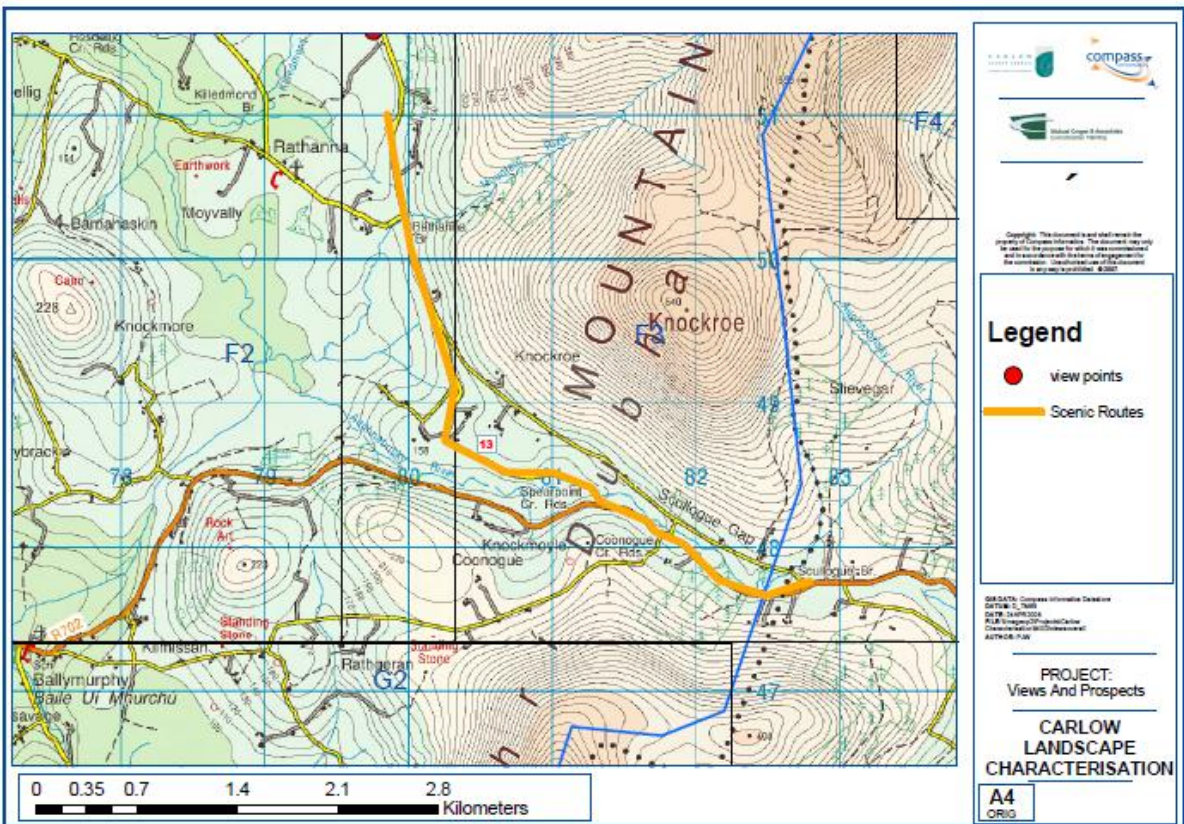
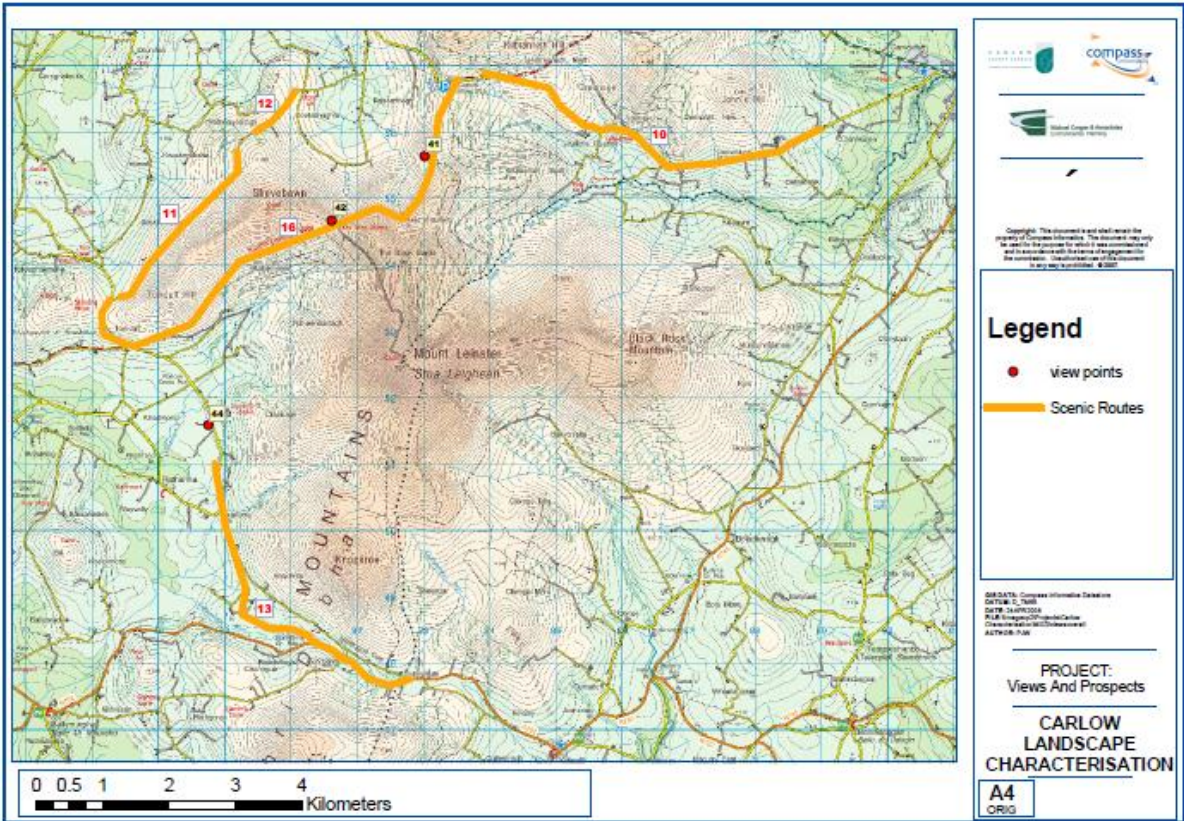
DATE: 12/01/2010
FILE: ViewsAndProspectsCarlow
CHARACTERISATION/Characterisation
AUTHOR: JAW

PROJECT:
 Views And Prospects

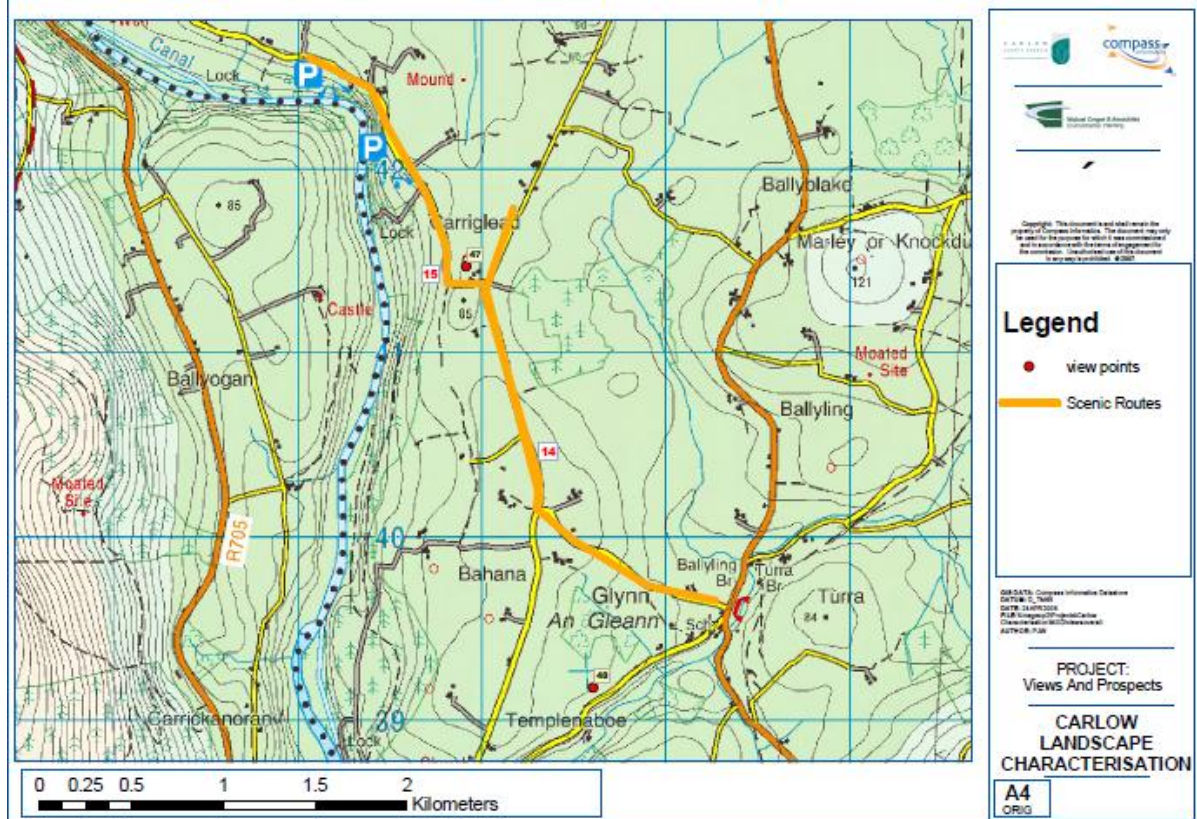
**CARLOW
 LANDSCAPE
 CHARACTERISATION**

A4
 ORIG

Carlow County Landscape Character Assessment and
Schedule of Protected Views



Carlow County Landscape Character Assessment and
Schedule of Protected Views



Schedules of Existing and Proposed Views, Prospects and Scenic Routes

The following Schedule includes all existing [1 - 63] and proposed [64 - 71] Views, Prospects and existing [1 - 20] and proposed [21 - 24] Scenic Routes. Mapped details of the locations of the Proposed Additional have been provided previously at Part Four.

Schedule of Views and Prospects							
ID	Location	Orientation	Route	Type	Features	Qualities	Comments
1	Kildavin	southwest	L2070 - 0	view	Valley of River Slaney and Blackstairs. Route of south Leinster Way.	3	Quarry in foreground reduces view quality
2	Clonegall Bridge	south	L2021 - 141	view	Derry River	2	Near entrance to Huntington Castle
3	Knocknatubbrid	south	L6042 - 0	vista	Typical rolling farmland with ridge on horizon	3	
4	South of Tullow	east	L20201- 0	vista	Typical Rolling farmland	3	Near Mount Wolseley
5	Killerrig Cross	260 -320 °	R726	vista	Panoramic view of Killeshin Hills	3	
6	Kill Cross	80 -140°	R 727	vista	Panorama across Central Plain to Blackstairs	3	
7	Lisnevagh	east	L2003- 23	vista	River Slaney - East Rolling Farmlands	3	
8	Lisnevagh Gardens	east	L2003 - 23	vista	East rolling farmlands and distant hills	4	Quality of view reduced by pylon and one off housing
9	North side of Constable Hill	southeast	L60093	vista		4	Panorama diminished by one off housing
10	Saulsford Bridge	south	R727 - 148	view	Constable and Eagle Hills	2	

Schedule of Views and Prospects							
ID	Location	Orientation	Route	Type	Features	Qualities	Comments
11	Eagle Hill	east	L2005	view	Eagle Hill	3	Galvanised shed in foreground weakens quality
12	Between Constable/Eagle Hills	170°-260°	L 2005	vista	Panorama of river Slaney-East Rolling Hills and Blackstairs	3	
13	Minvaud East	east	L2005 - 1	vista	Panoramic view towards Wicklow Hills	2	
14	West of Clonmore at Blackhill	north	L2007-21	view	Eagle and Constable Hills		
15	West of Clonmore at Blackhill	southeast	L2007 - 21	Vista	South end of River Slaney East Rolling landscape /Blackstairs	3	
16	On Constable Hill	east	L6009-14	View	Eagle Hill	2	
17	On Constable Hill	180 -300°	L6009-14	Vista	South end of River Slaney East Rolling landscape /Blackstairs	3	
18	Porchavodda	south	R747-30	Vista	Panorama over Hacketstown with Constable /Eagle and Wicklow Hills	3	
19	Duckett's Grove	southeast	L50301	View	Heritage site	2	
20	Duckett's Grove	northeast	L50301	Vista	Spreading Central Plain	3	

Schedule of Views and Prospects							
ID	Location	Orientation	Route	Type	Features	Qualities	Comments
					and forest in distance		
21	Duckett's Grove	Approach to site from west	L50301	view	Heritage Site	2	
22	Palatine	90 -140°	L4015	Vista	Central plain and avenue to Duckett's Grove	3	
23	Palatine	280-320°	L4015	Vista	Panorama over central plain to Killeshin Hills	3	
24	Moyle	280 -320°	L3053	vista	Burren River Valley	4	
25	Kellistown East	southeast	L3053 - 40	view	Treed ridge and church	3	
26	Killyballyhue	southeast	L30504	vista	Panorama of Central Plain to Blackstairs	4	
27	South of Nurney	280 -340°	L7146	view	Hill with forest at Newtown/Bradley's Cross	3	
28	Newown	west	L7146	Vista	Killeshin Hills	3	
29	Leighlinbridge	south	R705-24	View	River Barrow	2	
30	Leighlinbridge	north	R705-24	View	River Barrow and Black Church	2	
31	Ridge Cross	east	L3037-24	Vista	Panorama across Central Plain to Balckstairs	3	
32	Tuolocreen Cross	east	L7123	Vista	Panorama from	3	

Schedule of Views and Prospects							
ID	Location	Orientation	Route	Type	Features	Qualities	Comments
					Killeshin Hills across central plain to Blackstairs		
33	Milford	East and north	L3039 - 14	View	River Barrow	2	
34	Muine Bheag	south	R705 -42	View	View of town from point to north of entrance along River Barrow	3	
35	Ballymoon Castle	south	R724	View	Heritage Site	2	
36	Swing Cross	east	R724 -67	Vista	Panorama across central plain to Blackstairs	3	
37	Immediate west of Ullard Bridge	east	R724 - 46	Vista	Panorama from Killeshin Hills across Central Plain	3	
38	Immediate north of Shangarry Cross	east	R724- 67	View	Panorama from Killeshin Hills across Central Plain	3	
39	Myshal	From entrance	L7109	View	Adelaide Memorial Church	2	
40	Ballypierce	east	N80	Vista	Valley River Slaney	4	Large saw mills in

Schedule of Views and Prospects							
ID	Location	Orientation	Route	Type	Features	Qualities	Comments
							view
41	South of Carrol's Cross	west	L3005	Vista	view Panorama across Central Plain	2	
42	The Nine Stones	west	L3005 23	Vista	Panorama from car park across central plain	2	
43	Tinnamogney	North of Myshal	L3032	View	View of Memorial Church	2	
44	Crannagh	east	3001 - 134	Vista	Panoramic view of Blackstairs	3	
45	Cournellan	east	R729	Vista	Panoramic view of Blackstairs	3	
46	Clashganny Locks		R729	View	River Barrow	2	Marked viewing point
47	Carriglead	east	L3008-	Vista	South end of Blackstairs	3	
48	Glynn/St.Mullins Road	southwest	L3010	View	View towards Brandon	3	
49	St Mullins	south	L3010	View	Approach to village	3	
50	Borris	southeast	R702	View	Curved Main street and Blackstairs	1	Classic framed view of the Blackstairs Mountains
58	Borris	northwest	R702	View	View of town	3	Town and railway

Schedule of Views and Prospects							
ID	Location	Orientation	Route	Type	Features	Qualities	Comments
							viaduct with rolling hills as backdrop
59	St.Mullins		L30082	Vista	Green area beside Mound and Parish Church	2	
60	St.Mullins	southwest	L3008-64	View	Across Heritage Centre	2	Hills to south and west
61	St.Mullins	southwest	L30083	View	River Barrow	3	Backdrop of Brandon to northwest
62	Templenaboe	South and east	L3008-46	View	Across St.Mullins Heritage Centre	3	View of Blackstairs to east
63	Newtown	southwest	R729	view	Brandon	3	Rolling landscape in foreground
64	High ground just north of Ballinkillen on the Ballinkillen to Lorum road	northeast to southwest	View of entire Blackstairs and Barrow Valley from Mt Leinster to Brandon Hill. Currane, Mt Leinster to Brandon Hill. Views towards Slievebawn.			4	Offers expansive vistas of the plain to the north and the uplands to the south.
65	High ground just north of Ballinkillen on the Ballinkillen to Lorum road	northeast to southwest	View of entire Blackstairs and Barrow Valley from Mt Leinster to Brandon Hill. Currane, Mt			4	Offers expansive vistas of the plain to the north and the uplands to the south.

Schedule of Views and Prospects							
ID	Location	Orientation	Route	Type	Features	Qualities	Comments
			Leinster to Brandon Hill. Views towards Slievebawn.				
66	Panoramic view on R705 from point north of Ballyphenan T-junction.	northeast to south	Intermittent views of entire Blackstairs from Currane and Mt Leinster to Blackstairs.			4	
67	Spahill Cross roads	southwest	Panoramic view looking towards Borris Viaduct and Ballycoppigan.			3	
68	Cashel Cross and Doyle's Cross Roads	southwest	Panoramic view from Cashel Cross looking towards Borris ACA, Borris House demesne and Ballycoppigan			3	
69	Ballybrack	southwest	Panoramic views looking towards Brandon Hill.			2	
70	Ballybrack	southwest	Panoramic views looking towards Brandon Hill.			4	
71	Tinnecarrig	northeast to south	Panoramic view on R703 from high point at Tinnecarrig. View of entire Mt Leinster and Blackstairs range			3	

Schedule of Scenic Routes					
ID	Location	Route	Features	Qualities	Comments
1	North Clonegal	L2021-97	Valley to Wexford Uplands	4	Numerous houses and tall hedges restrict view
2	Lisnavagh-Lisnavagh Gardens	L2003-23	View of mountains to east	3	Continuity of view limited by housing hedges and Pylon/ESB line
3	South of Rathvilly	N81-82	Mixed landscape low level to west	4	
4	Grangeford Road	R725-17	Central Plain	4	
5	Ballyryan	L3052-42	Mixed landscape low level to west	4	
6	Ridge Cross Roads	L7123-0	Central Plain	3	One off housing impact on view
7	Road to the Butts	L3037-11	Panorama across central plain	3	
8	Tomard Wood	L7130-26	Panorama to south east	2	Partly obscured by road embankments
9	Tomard lower	L3041-19	Panorama across central plain	2	
10	Mt. Leinster Drive	L2026	Blackstairs	2	
11	Slievebawn	L3011	Panorama Blackstairs and Plain	2	
12		L3011	Blackstairs	2	
13	Scullogue Gap	L3001-134	Blackstairs	3	
14	Carriglead/Glynn	L7061	Blackstairs	3	
15	South from Graiguenamanagh	L3008	Barrow Valley and Kilkenny hills to west	3	
16	South Leinster Way	L3005	Scenic views in all Directions of Uplands	2	
17	Cournella Cross Roads	R729	Scenic views in all Directions of	2	

Schedule of Scenic Routes					
ID	Location	Route	Features	Qualities	Comments
			Uplands		
18	Coolnamara	R729	Panoramic views to south and west of Brandon and Blackstairs	4	
19	Marley or Knockduff	L 3007-49 and L7004	Scenic views across undulating lands to Blackstairs	3	
20	Glynn to St.Mullins	L3010	Scenic views to south	3	
20	Approach to St.Mullins from south	L3008-64	Scenic views of Brandonnorthwest and Blackstairs - east	4	
21	Saint Mullin's	From St Mullins to Glynn along river valley	Intermittent views to Blackstairs and Brandon east and west.	3	Views are intermittent because of tall hedges. The southern part of the route is an integral part of Saint Mullins
22	SE of Borris	From Rathanna to Borris via Rosdellig, Ballybrack, Kyle, Tinnacarrig, Baroughan Little, Ballycoppigan and Kilcoltrim.	Panoramic view on R703 from high point at Tinnecarrig. View northeast to south of entire Mt Leinster and Blackstairs range Panoramic views from Ballybrack looking southwest towards Brandon Hill and Blackstairs. Views North West to Borris ACA, views to south of entire Blackstairs range and southwest to Brandon Hill	2	The topographic variety, scale of roads, presence of historic properties and significant quantities of mature vegetation combine to confer this route with a sequence of views and experiences that vary from local enclosure to surprising panoramas across nearby and distant views of uplands.
23	NW of Borris	R705 Borris to Ballyfeanan, just south of Kilcumney junction	Views northeast to south of entire Blackstairs from Currane and Mt Leinster to Blackstairs.	4	While the local landscape is unremarkable, this approach road, with expansive views of uplands, is an integral part of the context and setting of Borris.
24	Ballinkillin/Lorum Environs	Ballinree Cross Roads	Views northeast to southwest of entire Blackstairs and Barrow Valley from Mt Leinster	4	While the local landscape is unremarkable – the location offer expansive vistas of the plain to the north and the

Schedule of Scenic Routes					
ID	Location	Route	Features	Qualities	Comments
		to Kilgraney with loop between Ballinkillin and Lorum	<p>to Brandon Hill. Currane, Mt Leinster to Brandon Hill.</p> <p>Views southeast towards Slievebawn.</p> <p>Views and vista from Lorum Old Rectory</p> <p>View of the mountain range is on the unnumbered road leading off the R705, opposite the entrance to Kilgraney House (behind the old Kilgreaney School House) over the Ballinkillen village.</p> <p>Corries Cross looking east and south towards Mt Leinster</p>		uplands to the south.

Addendum to Carlow County Landscape Character Assessment and Schedule of Protected Views

Combined and consolidated tables and maps for the 'Schedule of Views and Prospects' and 'Schedule of Scenic Routes' included in the Landscape Character Assessment.

Table 9.3 Schedule of Views and Prospects

No.	Description	Location
1	View southwest, of valley of River Slaney, Route of South Leinster Way	Kildavin
2	View south, of Derry River	Clonegall Bridge
3	Vista south, of typical rolling farmland	Knocknatubbrid
4	Vista east, of typical rolling farmland	South of Tullow
5	Vista 260-320°, panoramic view of Killeshin Hills	Killerrig Cross
6	Vista 80-140°, panorama across Central Plain to Blackstairs	Kill Cross
7	Vista east, of River Slaney-East Rolling Farmlands	Lisnevagh
8	Vista east, of rolling farmlands and distant hills	Lisnevagh Gardens
9	Vista southeast	North side of Constable Hill
10	View south, of Constable and Eagle Hills	Sualsford Bridge
11	View east, of Eagle Hill	Eagle Hill
12	Vista 170-260°, panorama of River Slaney-East Rolling Hills and Blackstairs	Between Constable/Eagle Hills
13	Vista east, panoramic view towards Wicklow Hills	Minvaud East
14	View north, of Eagle and Constable Hills	West of Clonmore at Blackhill
15	Vista southeast, of south end of River Slaney-East Rolling landscape/Blackstairs	West of Clonmore at Blackhill
16	View east, of Eagle Hill	On Constable Hill
17	Vista 180-300°, of south end of River Slaney-East Rolling landscape/Blackstairs	On Constable Hill
18	Vista south, Panorama over Hacketstown with Constable, Eagle and Wicklow Hills	Porchavodda
19	View southeast, of heritage site	Duckett's Grove
20	Vista northeast, of spreading central plain and forest in distance	Duckett's Grove
21	View on approach from west, of heritage site	Duckett's Grove
22	Vista 90-140°, of central plain and avenue to Duckett's Grove	Palatine
23	Vista 280-320°, panorama over central plain to Killeshin Hills	Palatine
24	Vista 280-320°, of Burren River Valley	Moyle
25	View southeast, of tree ridge and church	Kellistown East
26	Vista southeast, panorama of central plain to Blackstairs	Killyballyhue
27	View 280-340°, of hill with forest at Newtown/Bradley's Cross	South of Nurney
28	Vista west, of Killeshin Hills	Newtown
29	View south, of River Barrow	Leighlinbridge
30	View north, of River Barrow and Black Church	Leighlinbridge
31	Vista east, panorama across central plain to Blackstairs	Ridge Cross
32	Vista east, panorama from Killeshin Hills across central plain to Blackstairs	Tuolcree Cross
33	View east and north, of River Barrow	Milford

34	View south, of town from point to north of entrance along River Barrow	Muine Bheag
35	View south, of heritage site	Ballymoon Castle
36	Vista east, panorama across central plain to Blackstairs	Swing Cross
37	Vista east, panorama from Killeshin Hills across central plain	Immediate west of Ullard Bridge
38	View east, panorama with Killeshin Hills across central plain	Immediate north of Shangarry Cross
39	View from entrance, of Adelaide Memorial Church	Myshall
40	Vista east, of valley (River Slaney)	Ballypierce
41	Vista west, panorama across central plain	South of Carrol's Cross
42	Vista west, panorama from car park across central plain	The Nine Stones
43	View north of Myshall, of Adelaide Memorial Church	Tinnamogney
44	Vista east, panoramic view of Blackstairs	Crannagh
45	Vista east, panoramic view of Blackstairs	Cournellan
46	View of River Barrow	Clashganny Locks
47	Vista east, of south end of Blackstairs	Carriglead
48	View southwest towards Brandon Hill	Glynn/St. Mullins Road
49	View south, approach to village	St. Mullins
50	View southeast, of curved Main Street and Blackstairs	Borris
51	View northwest of town	Borris
52	Vista, green area beside mound and parish church	St. Mullins
53	View southwest, across Heritage Centre	St. Mullins
54	View southwest, of River Barrow	St. Mullins
55	View south and east, across St. Mullins Heritage Centre	Templebaboe
56	View southwest, of Brandon Hill	Newtown
57	View northeast to southwest of entire Blackstairs and Barrow Valley from Mt. Leinster to Brandon Hill. Currane, Mt. Leinster to Brandon Hill. Views towards Slievebawn.	High ground just north of Ballinkillen on the Ballinkillen to Lorum road
58	View northeast to southwest of entire Blackstairs and Barrow Valley from Mt. Leinster to Brandon Hill. Currane, Mt. Leinster to Brandon Hill Views towards Slievebawn.	High ground just north of Ballinkillen on the Ballinkillen to Lorum road
59	Intermittent views northeast to south of entire Blackstairs from Currane and Mt. Leinster to Blackstairs.	On R705 from point north of the Ballyphenan T-junction
60	Panoramic view southwest, looking towards Borris Viaduct and Ballycoppigan	Spahill Cross Roads
61	Panoramic view southwest, from Cashel Cross looking towards Borris ACA, Borris House Demesne and Ballycoppigan	Cashel Cross and Doyle's Cross Roads

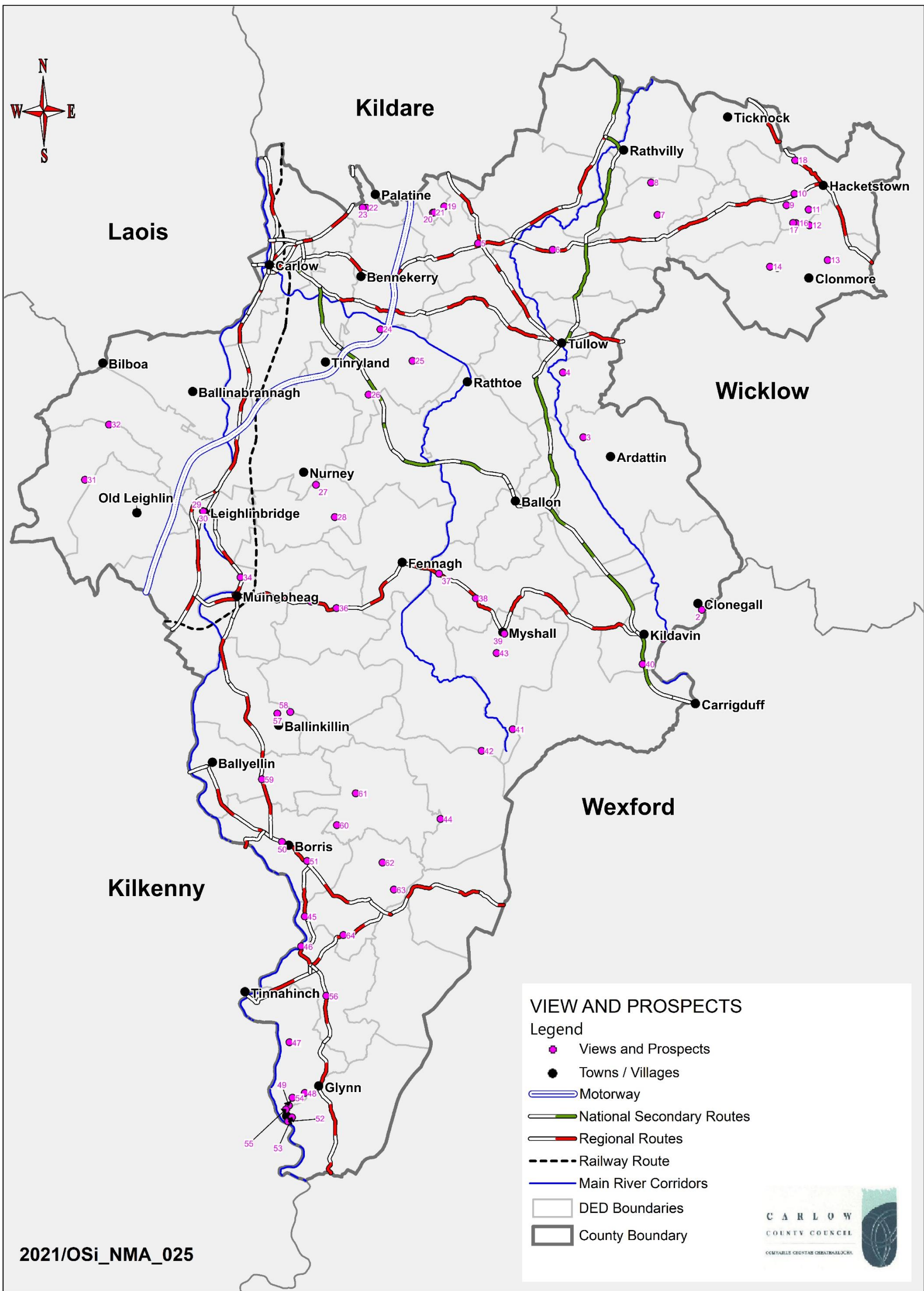
62	Panoramic views southwest, looking towards Brandon Hill	Ballybrack
63	Panoramic views southwest, looking towards Brandon Hill	Ballybrack
64	Panoramic view northeast to south, on R703 from high point at Tinnecarrig. View of entire Mt. Leinster and Blackstairs range	Tinnecarrig

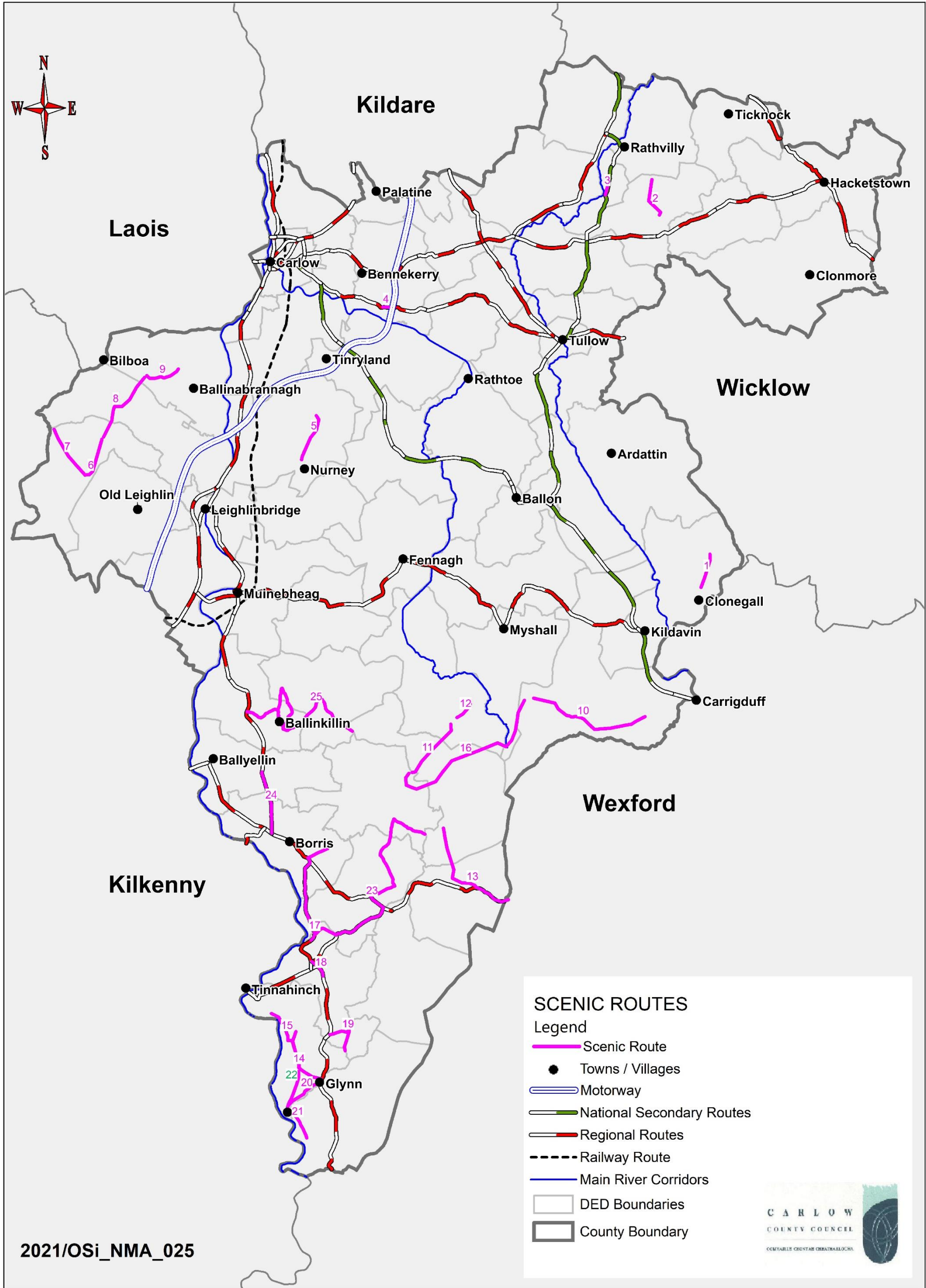
Table 9.4 Schedule of Scenic Routes

No.	Route	Description	Location
1	L2021-97	Valley to Wexford Uplands	North Clonegal
2	L2003-23	View of mountains to east	Lisnavagh-Lisnavagh Gardens
3	N81-82	Mixed landscape low level to west	South of Rathvilly
4	R725-17	Central Plain	Grangford Road
5	L3052-42	Mixed landscape low level to west	Ballyryan
6	L7123-0	Central Plain	Ridge Cross Roads
7	L3037-11	Panorama across central plain	Road to the Butts
8	L7130-26	Panorama to southeast	Tomard Wood
9	L3041-19	Panorama across central plain	Tomard Lower
10	L2026	Blackstairs	Mt. Leinster Drive
11	L3011	Panorama Blackstairs and plain	Slievebawn
12	L3011	Blackstairs	
13	L3001-134	Blackstairs	Scullogue Gap
14	L7061	Blackstairs	Carriglead/Glynn
15	L3008	Barrow Valley and Kilkenny hills to west	South from Graiguenamanagh
16	L3005	Scenic views in all directions of uplands	South Leinster Way
17	R729	Scenic views in all directions of uplands	Cournellan Cross Roads
18	R729	Panoramic views to south and west of Brandon and Blackstairs	Coolnamara
19	L3007-49 & L7004	Scenic views across undulating lands to Blackstairs	Marley or Knockduff
20	L3010	Scenic views to south	Glynn to St. Mullins
21	L3008-64	Scenic views of Brandon northwest and Blackstairs east	Approach to St. Mullins from south
22	From St. Mullins to Glynn along river valley	Intermittent views to Blackstairs and Brandon east and west	St. Mullins
23	From Rathanna to Borris via Rosdellig, Ballybrack, Kyle, Tinnacarrig, Barroughan	Panoramic view on R703 from high point at Tinnecarrig View northeast to south of entire Mt Leinster and Blackstairs range	Southeast of Borris

Table 9.4 Schedule of Scenic Routes

	Little, Ballycoppigan and Kicoltrim	<p>Panoramic views from Ballybrack looking southwest towards Brandon Hill and Blackstairs</p> <p>Views North West to Borris ACA, views to south of entire Blackstairs range and southwest to Brandon Hill</p>	
24	R705 Borris to Ballyfeanan, just south of Kilcumney junction	Views northeast to south of entire Blackstairs from Currane and Mt. Leinster to Blackstairs	Northwest of Borris
25	Ballinree Cross Roads to Kilgraney with loop between Ballinkillin and Lorum)	<p>Views northeast to southwest of entire Blackstairs and Barrow Valley from Mt Leinster to Brandon Hill. Currane, Mt Leinster to Brandon Hill.</p> <p>Views southeast towards Slievebawn.</p> <p>Views and vista from Lorum Old Rectory</p> <p>View of the mountain range is on the unnumbered road leading off the R705, opposite the entrance to Kilgraney House (behind the old Kilgreaney School House) over the Ballinkillen village.</p> <p>Corries Cross looking east and south towards Mt Leinster</p>	Ballinkillin/Lorum Environs





Kildare

Laois

Wicklow

Wexford

Kilkenny

● Ticknock

● Rathvilly

● Hacketstown

● Palatine

● Carlow

● Bennekerry

● Clonmore

● Bilboa

● Tinryland

● Tullow

● Ballinabrannagh

● Rathtoe

● Ardattin

● Old Leighlin

● Leighlinbridge

● Nurney

● Ballon

● Fennagh

● Muinebheag

● Myshall

● Kildavin

● Clonegall

● Carrigduff

● Ballinkillin

● Ballyellin

● Borris

11

12

16

10

13

17

18

19

15

14

20

21

22

23

24

25

20

21

22

23

24

25

20

21

22

23

24

25

20

21

22

23

24

25

20

21

22

23

24

25

20

21

22

23

24

25

20

21

22

23

24

25

20

21

22

23

24

25

20

21

22

23

24

25

20

21

22

23

24

25

20

21

22

23

24

25

20

21

22

23

24

25

20

21

22

23

24

25

20

21

22

23

24

25

20

21

22

23

24

25

20

21

22

23

24

25

20

21

22

23

24

25

20

21

22

23

24

25

20

21

22

23

24

25

20

21

22

23

24

25

20

21

22

23

24

25

20

21

22

23

24

25

20

21

22

23

24

25

20

21

22

23

24

25

20

21

22

23

24

25

20

21

22

23

24

25

20

21

22

23

24

25

20

21

22

23

24

25

20

21

22

23

24

25

20

21

22

23

24

25

20

21

22

23

24

25

20

21

22

23

24

25

20

21

22

23

24

25

20

21

22

23

24

25

20

21

22

23

24

25

20

21

22

23

24

25

20

21

22

23

24

25

20

21

22

23

24

25

20

21

22

23

24

25

20

21

22

23

24

25

20

21

22

23

24

25

20

21

22

23

24

25

20

21

22

23

24

25

20

21

22