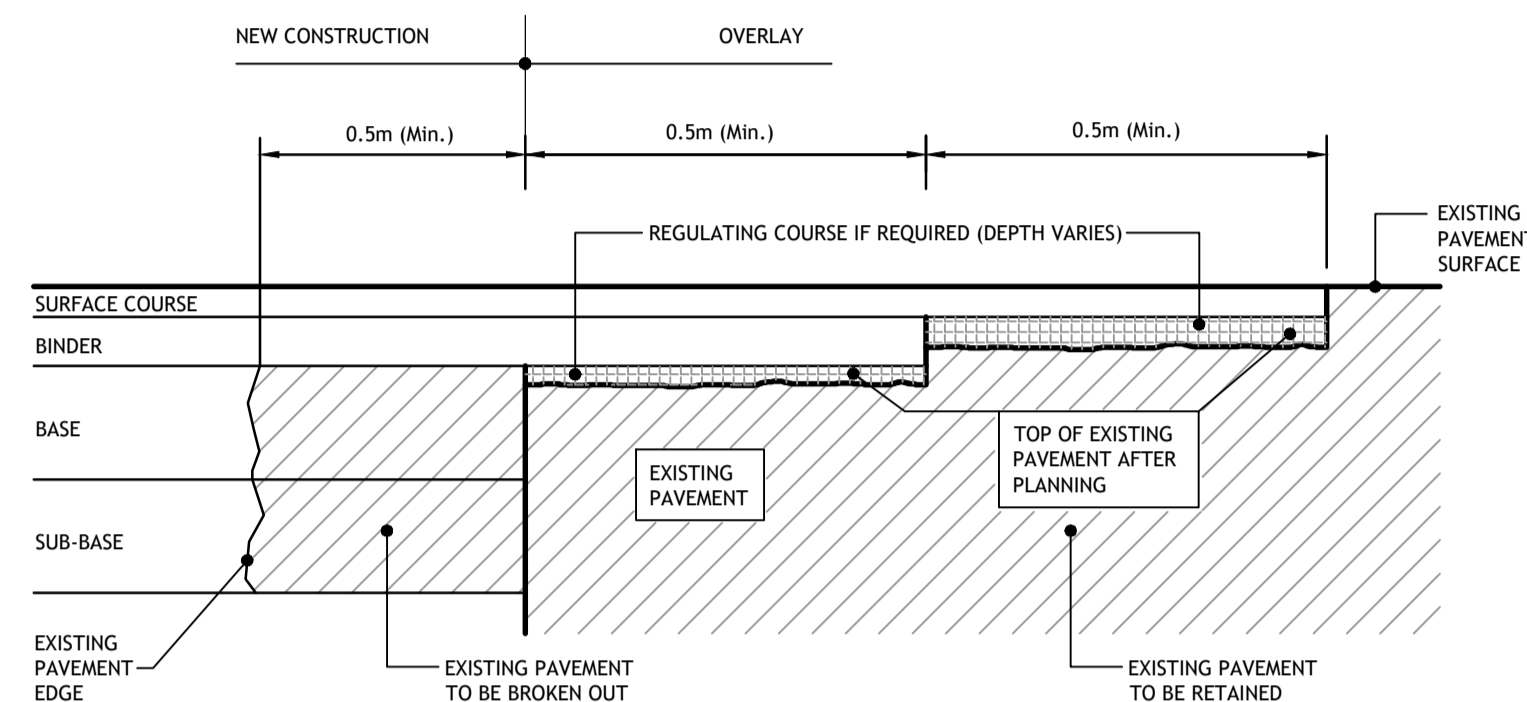
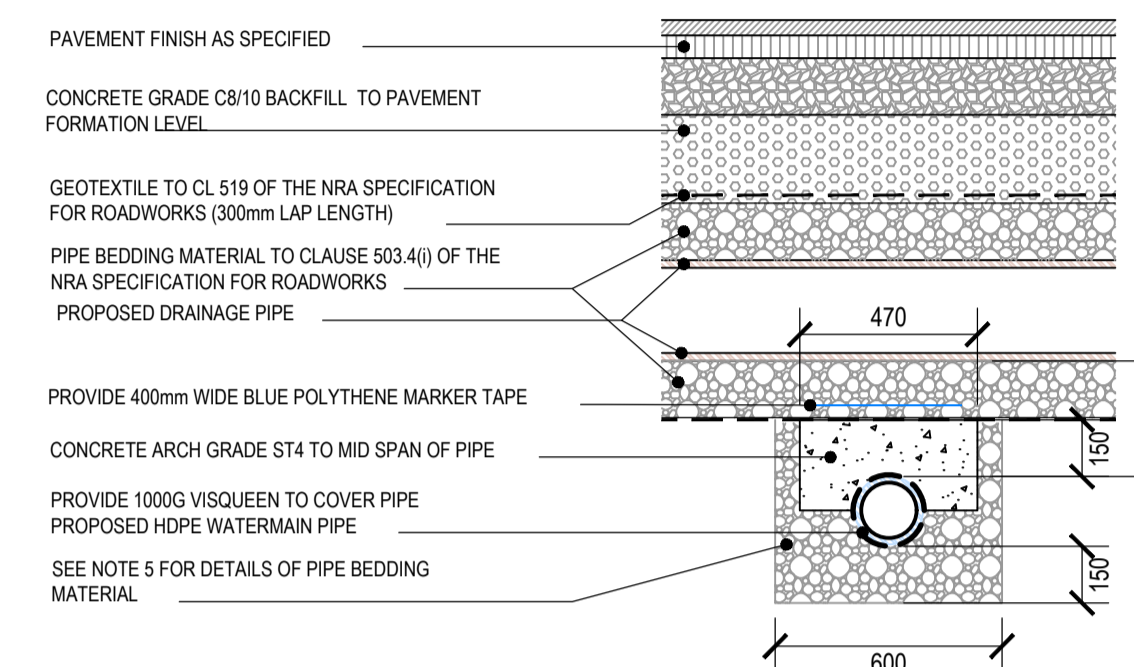


NOTES:

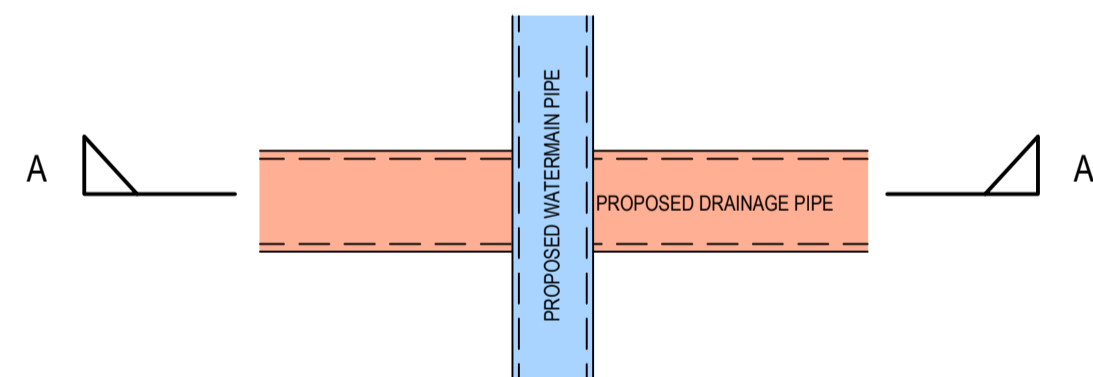
- EDGES OF EXISTING CARRIAGEWAY TO BE CUT BACK BY 500mm WITH A ROTARY SAW TO FORM A VERTICAL FACE AND PRIMED IN ACCORDANCE WITH CLAUSE 903.
- WHERE THE BASE IS TO BE LAID IN TWO LAYERS, THE UPPER LAYER OF BASE SHOULD BE STEPPED INTO THE EXISTING PAVEMENT BY 1m MIN. WITH THE BINDER AND SURFACE COURSE TO BE EACH STEPPED IN A FURTHER 1m MIN. RESPECTIVELY.
- JOINTS SEALED WITH HOT BITUMEN & TOPPED WITH FINE SAND/GRIT TO GET A MINIMUM 55 SKID RESISTANCE VALUE AS DETERMINED BY THE PORTABLE SKID RESISTANCE PENDULUM USED IN ACCORDANCE WITH ROAD NOTE 27 AND SHALL NOT EXCEED 3mm DEPTH AND 50mm WIDTH OR OTHER METHOD APPROVED BY THE ROAD AUTHORITY.
- THE COARSE AGGREGATE IN THE SURFACE COURSE ASPHALT CONCRETE SHALL HAVE A POLISHED STONE VALUE OF NOT LESS THAN 60.



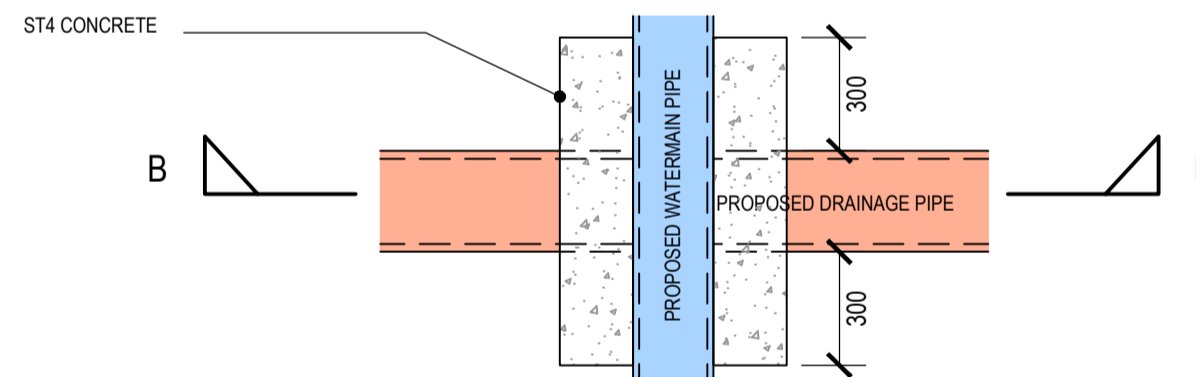
Transverse Joint Between Proposed Flexible Pavement & Existing Road (Tie In)
Scale - NTS



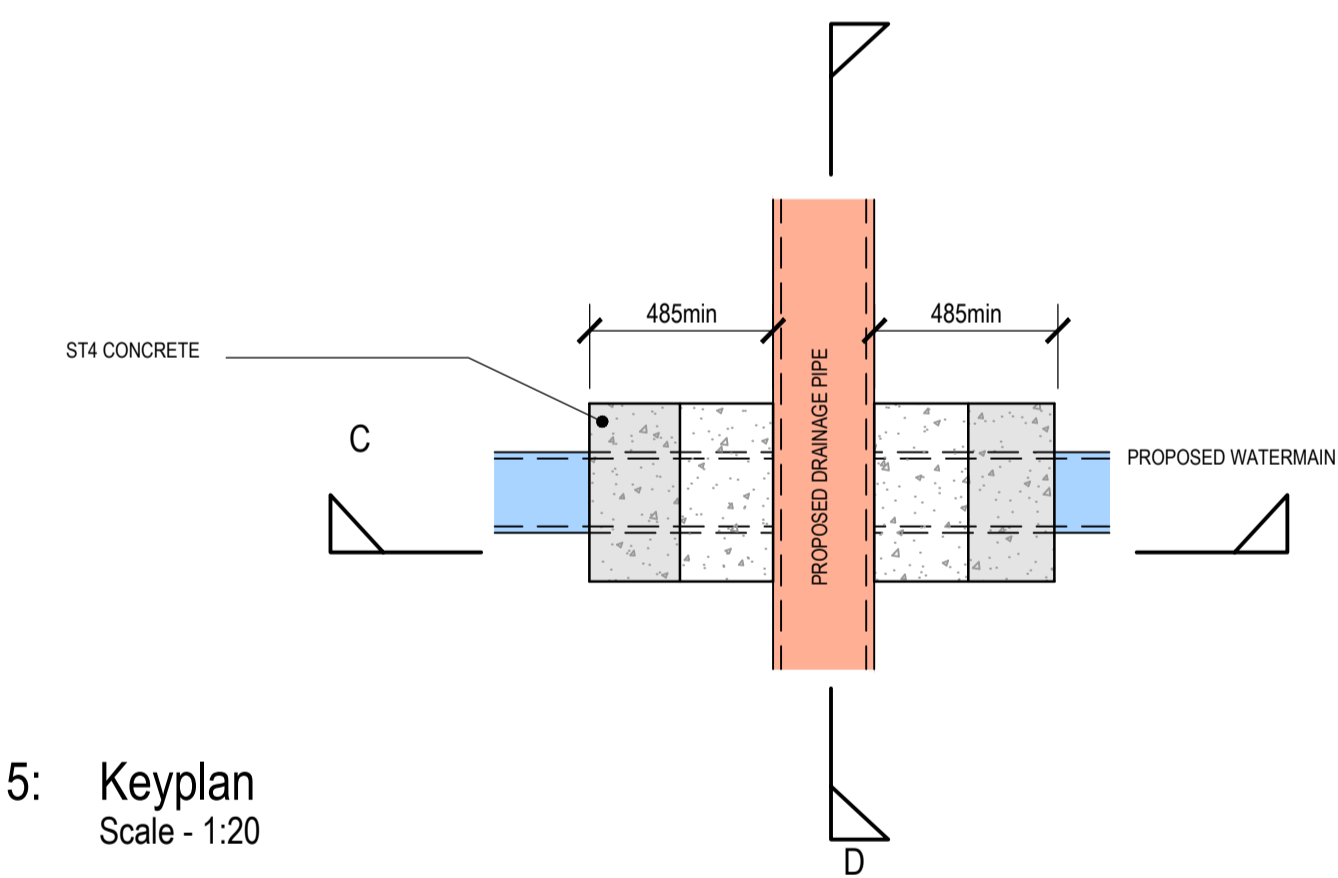
7: D-D Sewer Crossing Over Proposed Watermain
Scale - 1:20



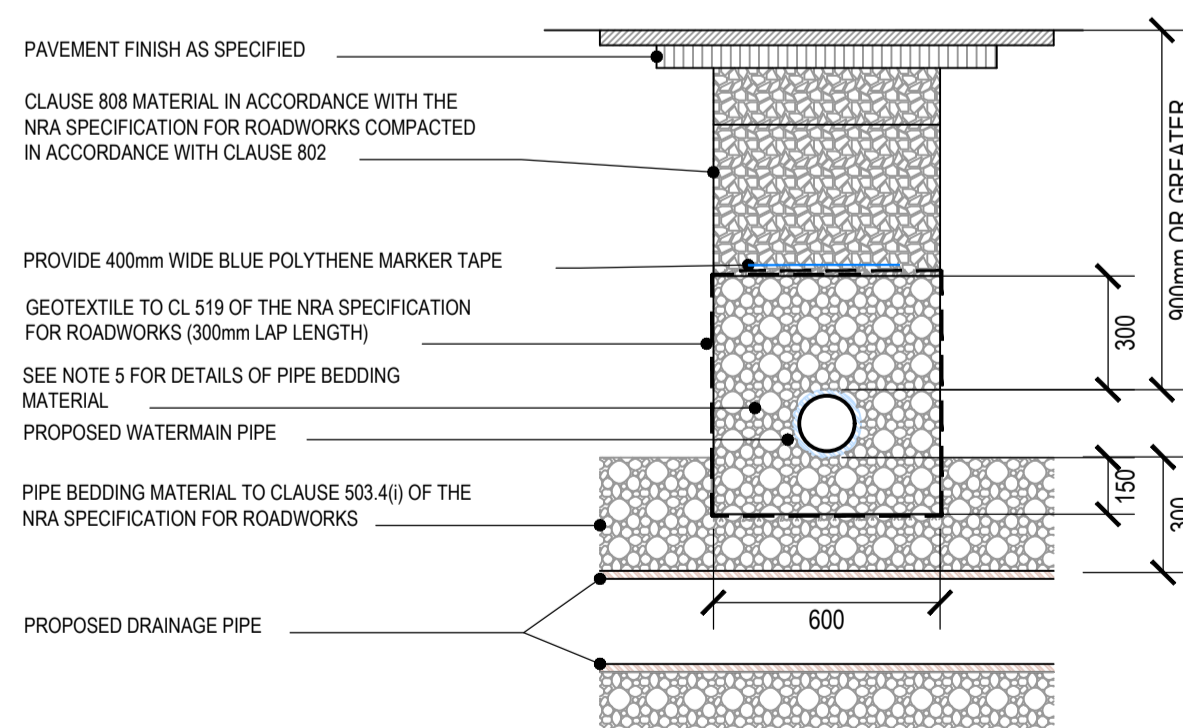
1: Keyplan
Scale - 1:20



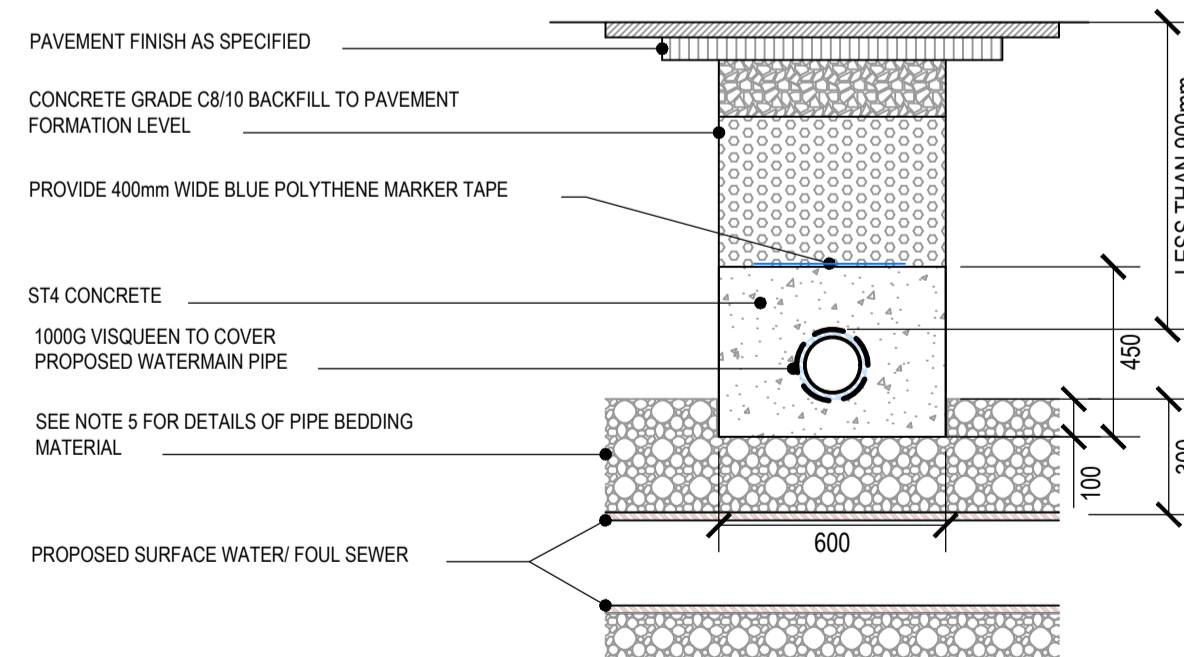
3: Keyplan
Scale - 1:20



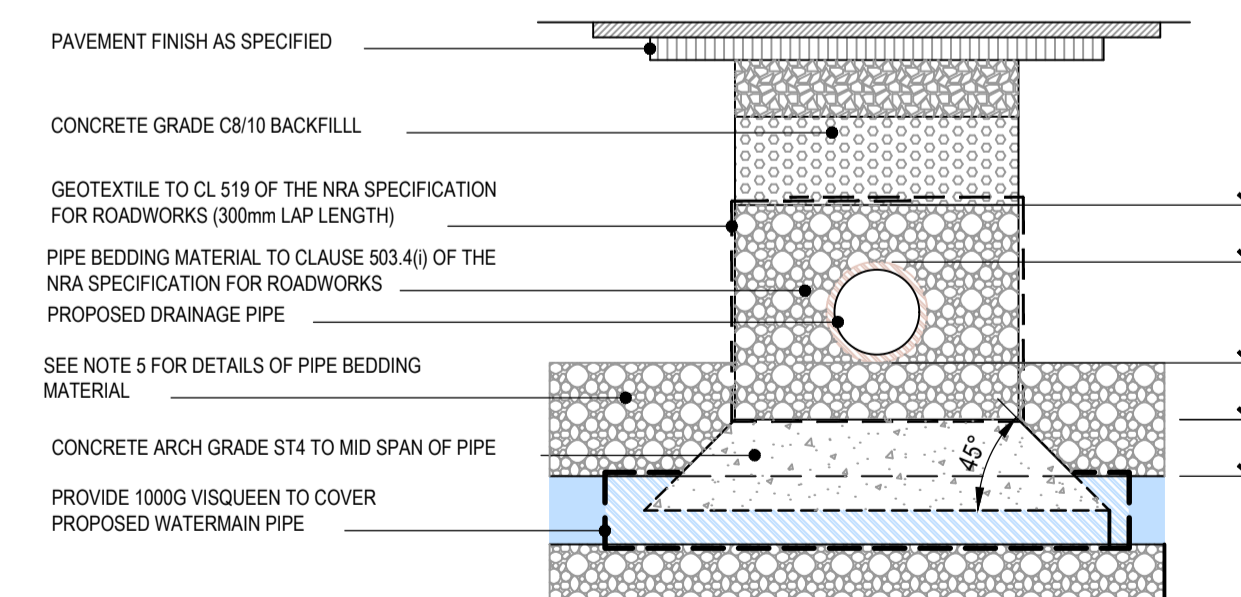
5: Keyplan
Scale - 1:20



2: A-A Watermain Crossing Over Proposed Drainage
Scale - 1:20 (MINIMUM DEPTH OF COVER OR GREATER)



4: B-B Watermain Crossing Over Proposed Drainage
Scale - 1:20



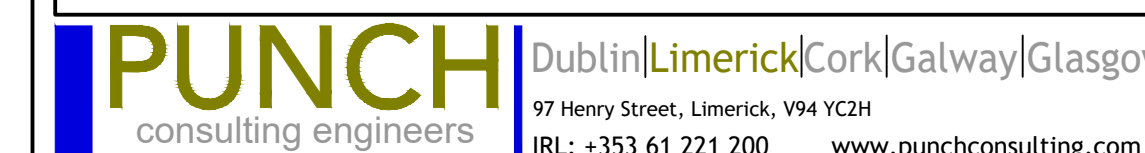
6: C-C Sewer Crossing Over Proposed Watermain
Scale - 1:20



Rev	Amendment	By	Date
PRO	ISSUED FOR STAGE 2A	DF	30/11/2020

Client:

Job: CARLOW COUNTY LIBRARY, TULLOW STREET, CARLOW.
Title: TYPICAL DETAILS - SHEET 2 OF 2



Stage: Preliminary	Rev:
Scale @ A1: As Shown	191-284-007
Technician Check: P.J. Mulcahy	PRO
Engineer Check: David Fitzpatrick	
Approved: C O'B	
Drawing No:	